

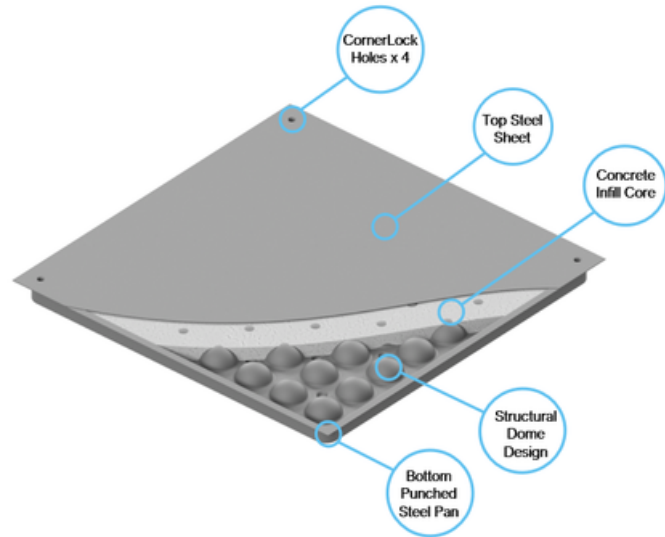
Tested in accordance with CISCA recommended procedures for raised access floors.

To view product details



ICSF Concore® 1000 Panel

Tate's Concore® 1000 raised access floor panel is intended for heavy duty commercial applications with a Design Load requirement of 4.5kN or less and is engineered to meet Tate Standards per CISCA testing methods



Specifications (Bare Finish Panel)

Panel Weight:	14.5kg
Panel Size:	600mm x 600mm x 33.45mm
Panel Core:	Cementitious compound
Construction:	Spot welded assembly
Finish:	Powder coated grey for corrosion protection

Understructure:	Cornerlock & Bolted Stringer system
Floor Heights:	Standard FFH range: 150mm - 1,000mm
Cover Options:	Factory applied HPL or Vinyl options
Slip Rating:	AS 4586: Dry = D1 Rating & Wet = P2 Rating
Fire Rating:	AS 9239.1: CRF \geq 4.5 kW/m ² & Smoke Development \leq 750 %/min

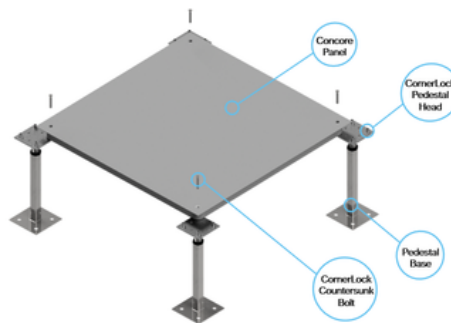
System Structural Performance

Static Loads			Rolling Loads		Impact Load
Concentrated Load	Ultimate Load	Factor of Safety	10 Passes	10,000 Passes	Drop Impact Load
4.5kN	9kN	2	4.5kN	3.3kN	0.67kN

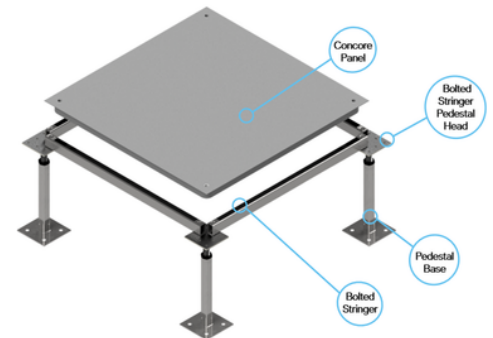
- Design load is the Ultimate Load divided by the Factor of Safety
- Static, Rolling & Impact Load tests are performed using CISCA Recommended Test Procedures for Access Floors by 3rd Party Independent
- Concentrated Load is based on Permanent Set Deflection \leq 0.7mm and Rolling Loads are based on Permanent Set Deflection \leq 1.02mm

System Type	System Weight
ICSF1000 Cornerlock System	42.2 kg/m ² (150mm FFH)
ICSF1000 Bolted Stringer System	47 kg/m ² (150mm FFH)

Cornerlock System



Bolted Stringer System



Tate Asia Pacific

Level 12, 100 George Street, Parramatta, Sydney. NSW. 2150
T: +61 (0)2 9612 2300 **E:** info.apac@tateglobal.com **W:** tateglobal.com

© 2026 Tate. We reserve the right to change specification or design and supply products which may differ from those described and illustrated without notice and without liability.
 tate-concore1000-panel-data-sheet-en-au-v1 | Issued April 2026

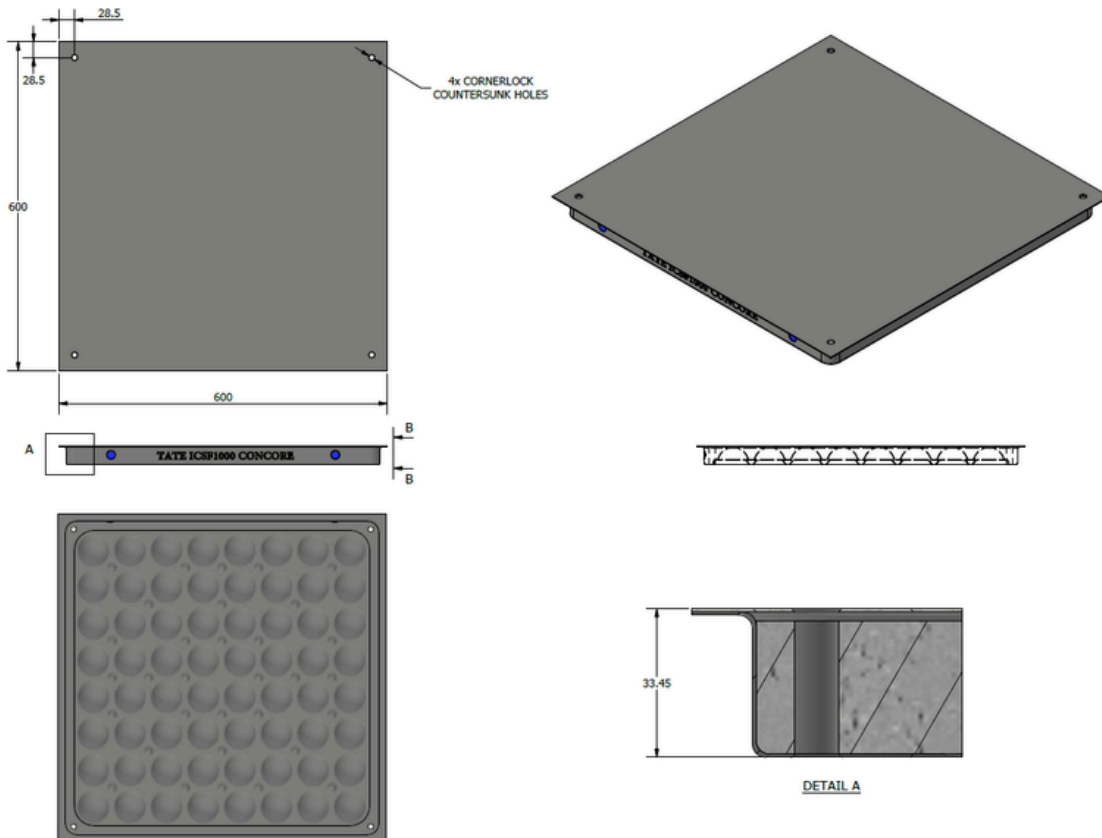


#planetpassionate



ICSF Concore[®] 1000 Panel

Panel Detail (Bare Finish)



Pedestal Options

Tate APAC Technical Team will provide guidance on selecting the optimal pedestal system, along with fixing method to support the **Concore 1000 Panel**, ensuring compliance with structural load requirements, finished floor heights, acoustic and seismic performance criteria. A range of engineered understructure systems are available to accommodate diverse project specifications and performance standards.

Sustainability



- Supported by a third-party verified EPD providing transparent, independently assessed impact data.

