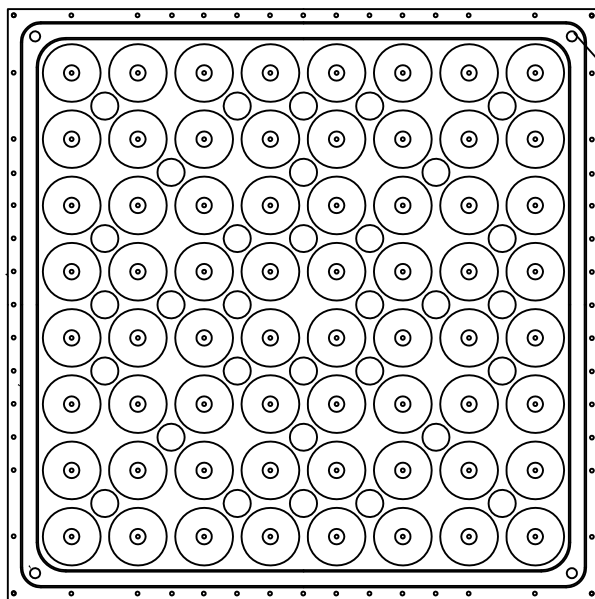


TOP VIEW



BOTTOM VIEW

SPECIFICATIONS

General information

- Panel weight: 61.1kg/m² bare.
- All steel welded construction filled internally with a cementitious core material.
- Protected from corrosion by an Epoxy Powder paint finish.
- Class A flame spread rating.
- Non-combustible material.

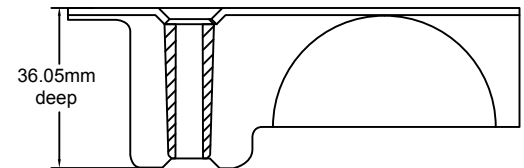
UNDERSTRUCTURE OPTIONS

- ☐ 120cm Bolted Stringer w/ fillet welded head

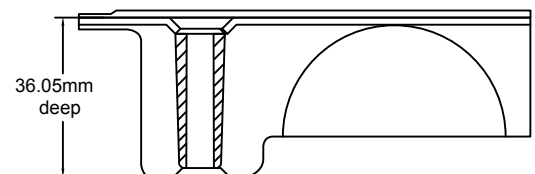
COVERING OPTIONS

Tile factory laminated with integral trim edge

- ☐ 1.5mm HPL(Colour) _____
- ☐ 3mm HPL(Colour) _____
- ☐ Bare Painted _____



Bare Panel



Laminated Panel With Integral Trim

System Performance Criteria (Tested on Actual Understructure)*								
System Type		SYSTEM WEIGHT	STATIC LOADS			ROLLING LOADS		IMPACT LOADS
Panel	Understructure		Design Loads	Ultimate Loads	Safety Factor	10 Passes	10,000 Passes	
ConCore ICSF3000-60cm	Bolted Stringer	68.4 kg / m ²	13.34kN	Min. 26.68kN	Min. 2.0	12.0kN	10.67kN	0.89kN

1. System Design Load is based on permanent set ≤ 0.010" (0.25mm) and is verified by loading panels in accordance with the CISCA concentrated load method but with panels installed on actual understructure instead of steel blocks. (Testing on blocks does not represent performance of an actual installation.) Ultimate, Rolling, and Impact Load tests are performed using CISCA Test Procedures.
2. Safety factor is Ultimate load divided by Design load.

Tate Asia-Pacific Pty Ltd

Level 12, 100 George Street, Parramatta NSW 2150

T: +61 (0)2 9612 2300 E: info@tateapac.com W: tateglobal.com

We reserve the right to change specification or design and supply products which may differ from those described and illustrated without notice and without liability. R 11/2025