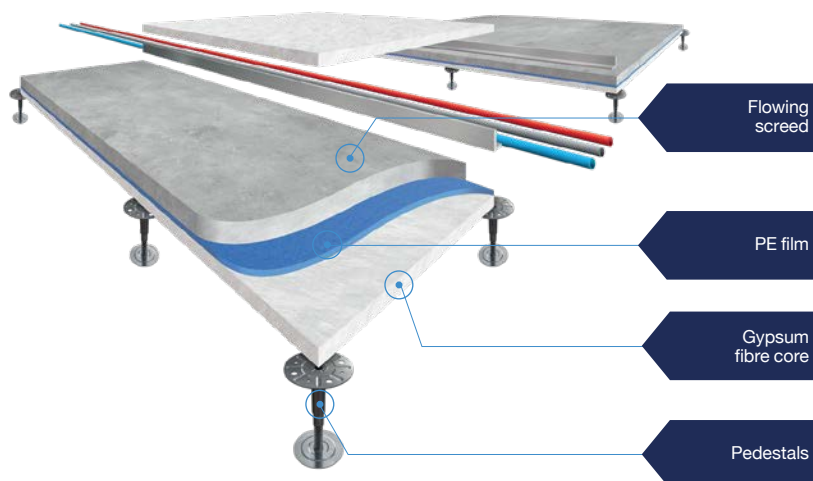


# LK 5-600-18 F171

## LOAD CLASS 5

The Tate Ecoprime hollow floor system LK5-600/18 was designed for a load according to DIN EN 13213: 2001, load class 5. They are used in rooms where there is a high cable density for electrical supply or data transfer and high flexibility for use is required, such as in offices, ticket halls, exhibition rooms or libraries. Due to the excellent sound improvement properties, the use in multi-storey buildings is often possible without additional requirements for the shell construction.



### Special features

Column spacing area	600 mm
Column spacing edge	600 mm
Screed thickness area	38 mm
Screed thickness edge	56 mm
System panel thickness	18 mm
System plate dimensions	1200 x 600 mm

### Substructure

Pedestal	Height adjustable steel pedestals M12 (F1 - F6), for higher constructions M16/M20
----------	---

### Statics according to DIN EN 13213: 2001

Load class	5
Working load	5 kN
Safety factor	2

### Fire protection according to DIN 4102-2: 1977

Building material class 4102	non-flammable
Fire-resistance class	F30 up to clear heights of 300 mm

### Sound insulation according to DIN EN ISO 10140: 2021, DIN EN ISO 10848: 2018 and DIN EN ISO 140: 2005

#### Impact sound reduction (horizontal) ( $L_{n,f,w,P}$ )

without covering	71 dB
with covering	46 dB
without covering with sound pad	*71-76** dB
with covering with sound pad	*44-47** dB

#### Airborne sound reduction ( $D_{n,f,w,P}$ )

without covering	52 dB
with covering	49 dB
without covering with sound pad	**47-53* dB
with covering with sound pad	**49-51* dB

#### Impact sound reduction (vertical) ( $\Delta L_{w,P}$ )

without covering	22 dB
with covering	30 dB
without covering with sound pad	*25-28** dB
with covering with sound pad	*34-37** dB

#### Note:

It should be noted that the use of sound pads can impact the system's rigidity. As a result, limitations with regard to the aforementioned load capacity must be taken into account.

Depending on the covering used, the sound values may differ. According to the manufacturer's specifications, the impact sound reduction resulting from the floor coverings ranges between  $\Delta L_w$ : 18-30 dB. If you require detailed information regarding the sound values, please feel free to contact the technical department.

\*Sound pad  $\varnothing$  60 x 5 mm

\*\*Sound pad  $\varnothing$  100 x 2 mm



Please scan the QR code or click [here](#) to go to the current product page.



**Tate.**

### Tate Global GmbH

Zum Stadion 4, 63808 Haibach, Germany

T: +49 (0) 6021 63949-0 E: [infoDE@tateglobal.com](mailto:infoDE@tateglobal.com) W: [tateglobal.com/de](http://tateglobal.com/de)

© 2025 Tate Global GmbH.

Tate Global GmbH reserves the right to amend or add to the product specifications without prior notice as part of our commitment to continuous improvements and the observance of legal changes.

tate-ecoprime-lk5-600-18-f171-datasheet-en-de-v2 1/2026



# LK 5-600-18 F171

The Tate hollow floor system Ecoprime LK5-600/18 was designed for a load according to DIN EN 13213: 2001, load class 5. This classification provides for a working load of 5,000 N and a breaking load of  $\geq 10,000$  N.

## Static measures

All supports can be installed with a maximum spacing of 600 mm in the surface and in the edge area. Additional supports must be installed in the corner areas for static reasons.

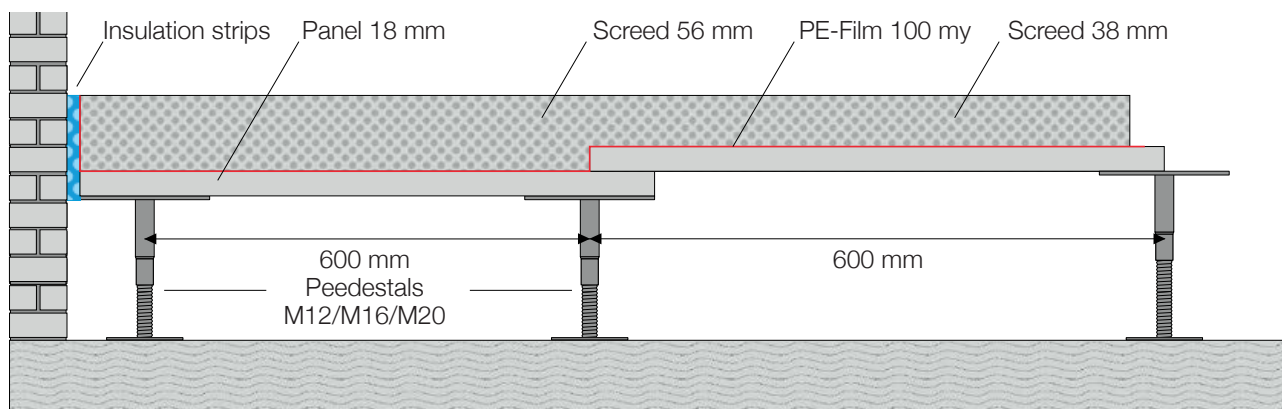
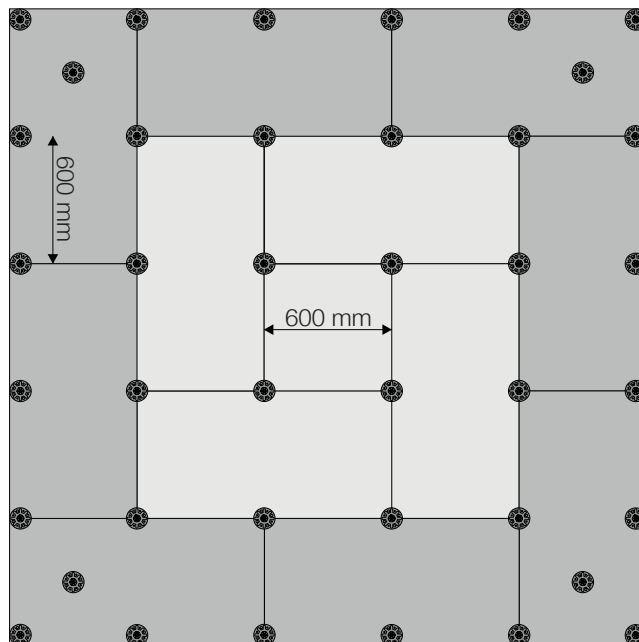
For static reasons, the panels are installed overlapping in the edge area (see drawing). This increases the screed thickness by the thickness of the system panel.

## Increased sound insulation requirements

If increased sound insulation is required, special insulation panels can be used in the support area.

## Fire protection

The system is tested according to ABP F30 according to DIN 4102-2: 1977 (clear height up to 300 mm with appropriate substructure).



Please scan the QR code or click [here](#) to go to the current product page.