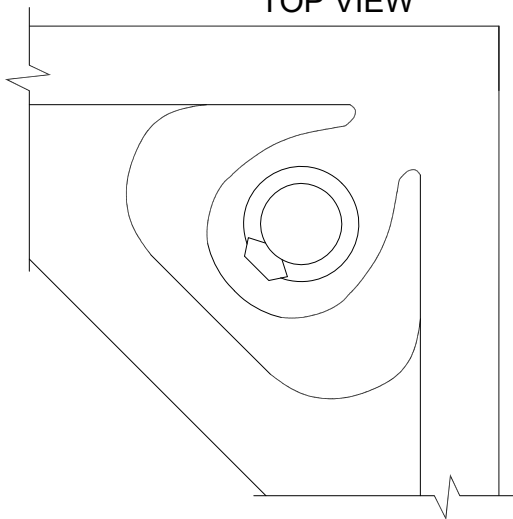


TOP VIEW



CORNER DETAIL

SPECIFICATIONS

General information (Bare Panel)

- All steel welded construction
- Protected from corrosion by an epoxy paint finish.
- Class A flame spread rating.

UNDERSTRUCTURE OPTIONS

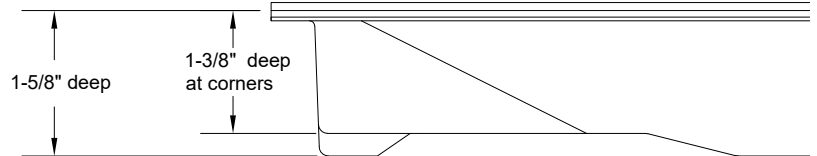
- ☐ 4' Bolted Stringer
- ☐ 4' Box Stringer

COVERING OPTIONS

Factory laminated rubber tile with monolithic edge

- ☐ 1/8" Noraplan Sentica Rubber
- ☐ 1/8" Noraplan Environcare Rubber
- Tile Color _____

Laminated Panel With Monolithic Edge



System Performance Criteria (Tested on Actual Understructure)

System Type	Understructure	SYSTEM WEIGHT	STATIC LOADS			ROLLING LOADS		IMPACT LOADS
			Design Loads	Ultimate Loads	Safety Factor	10 Passes	10,000 Passes	
All Steel 1250-24" Bare Panel	4' Bolted Stringer	7.0 lbs / ft ² 34.18 kg / m ²	1250 lbs 567 kg	Min. 2500lbs Min. 1134kg	Min. 2	500 lbs 227 kg	500 lbs 227 kg	150 lbs 68 kg
	4' Box Stringer	7.0 lbs / ft ² 34.18 kg / m ²	1250 lbs 567 kg	Min. 2500lbs Min. 1134kg	Min. 2	500 lbs 227 kg	500 lbs 227 kg	150 lbs 68 kg

COVERING	TILE WEIGHT	STATIC LOAD PERFORMANCE ³
Rubber (Tile only)	1 lbs / ft ² 4.88 kg / m ²	250 lbs 113 kg

1. System Design Load is based on permanent set $\leq 0.010"$ and is verified by loading panels in accordance with the CISC concentrated load method but with panels installed on actual understructure instead of steel blocks. (Testing on blocks does not represent performance of an actual installation.) Ultimate, Rolling, and Impact Load tests are performed using CISC test procedures.
2. Safety Factor is Ultimate Load divided by Design Load.
3. Most resilient tiles manufacturers rate their tiles per ASTM F970 which requires a minimum 250 psi static load performance, however some tiles may exceed this minimum requirement. Contact tile manufacturer for more information.
4. Published load ratings do not apply to perimeter, cut panels or panels with cutouts.



Tate reserves the right to amend product information without prior notice. Care has been taken to ensure that the contents of this publication are accurate, but Tate, its parent company and its subsidiary companies do not accept responsibility for errors or information that is found to be misleading or outdated. Suggestions for, or descriptions of, technical specifications and the end user or application of products are provided and must be verified prior to use. To ensure you are viewing the most recent and accurate product information, please scan the QR code.