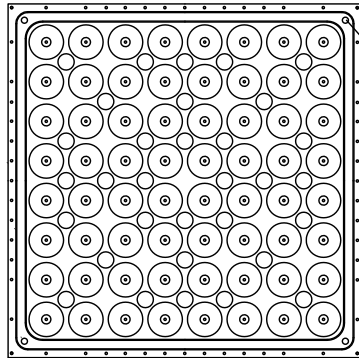
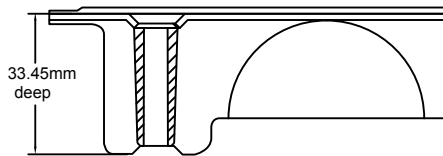


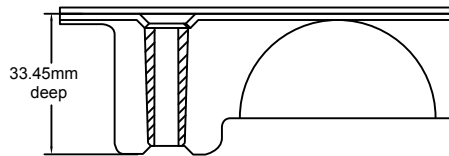
TOP VIEW



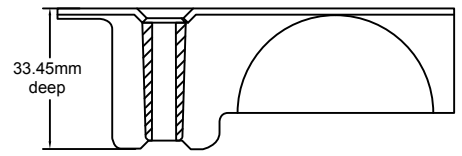
BOTTOM VIEW



Laminated Panel With Integral Trim



Laminated Panel With MONO PVC



Bare Panel

SPECIFICATIONS

General information

- Panel weight: 37.7kg/m² bare.
- All steel welded construction filled internally with a cementitious core material.
- Protected from corrosion by a powder paint finish.
- Class A flame spread rating.
- Non-combustible material.

UNDERSTRUCTURE OPTIONS

- ☐ Cornerlock
- ☐ 60cm Bolted Stringer 120cm
- ☐ Bolted Stringer 60cm UFAD
- ☐ Bolted Stringer 60cm UFAD
- ☐ Clip-on Stringer

COVERING OPTIONS

Tile factory laminated with integral trim edge

- ☐ 1.5mm HPL (Colour) _____
- ☐ 3mm HPL (Colour) _____

Tile factory laminated with mono edge

- ☐ 2mm PVC (Colour) _____
- ☐ 2mm Conductive PVC (Colour) _____

Tile factory laminated with mono edge

- ☐ 3mm PVC (Colour) _____
- ☐ 3mm Conductive PVC (Colour) _____

For additional laminate options contact Inside Sales

Bare Painted Panel Options

- ☐ Bare Painted Finish to accept carpet tile application

System Performance Criteria		(Tested on Actual Understructure)*						
System Type		SYSTEM WEIGHT	STATIC LOADS			ROLLING LOADS		IMPACT LOADS
Panel	Understructure		Design Loads	Ultimate Loads	Safety Factor	10 Passes	10,000 Passes	
ConCore® ICSF1000-60cm	Cornerlock	40.3 kg / m ²	4.4kN	Min. 8.9kN	Min. 2.0	3.6kN	2.7kN	0.55N
	Bolted Stringer	45.15 kg / m ²	4.4kN	Min. 8.9kN	Min. 2.0	3.6kN	2.7kN	0.55kN

1. System Design Load is based on permanent set $\leq 0.010"$ and is verified by loading panels in accordance with the CISCA concentrated load method but with panels installed on actual understructure instead of steel blocks. (Testing on blocks does not represent performance of an actual installation.) Ultimate, Rolling, and Impact Load tests are performed using CISCA Test Procedures.

2. Safety factor is Ultimate load divided by Design load.



Tate Asia-Pacific Pty Ltd

Level 12, 100 George Street, Parramatta, NSW, 2150

T: (02) 9612 2300 E: info@tateapac.com W: tateglobal.com

We reserve the right to change specification or design and supply products which may differ from those described and illustrated without notice and without liability. R 11/2025

Tate - ConCore 1000 - Data Sheet - en - au