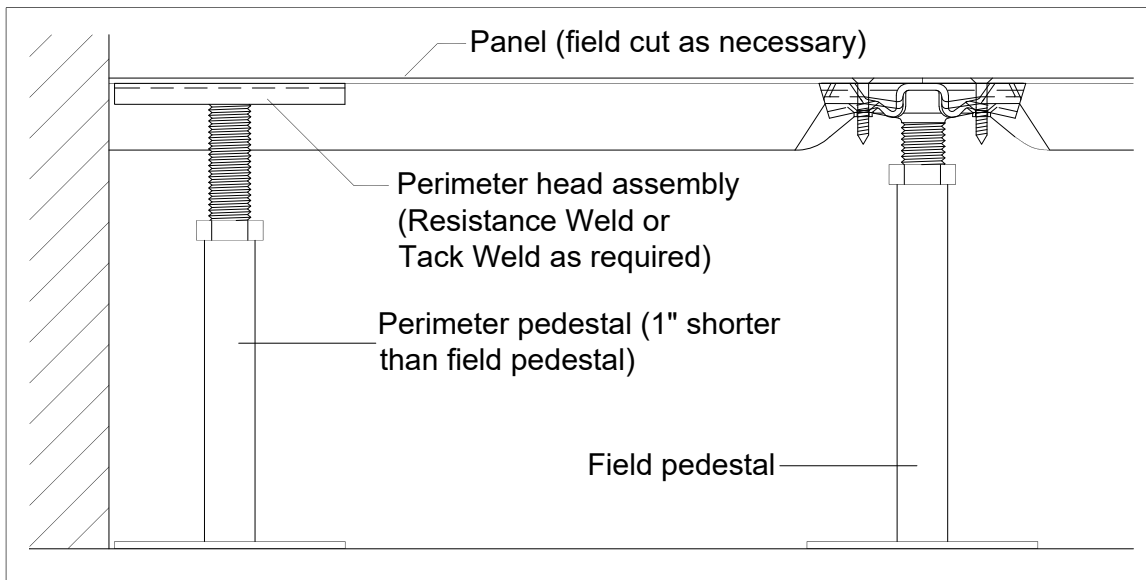


LEGEND

1. 7/8" (20mm) wide x 3/8" (9mm) deep x 4" (100mm) long x 16 ga formed steel hat channel
2. Steel stud
3/4" - 10 UNC
3. Nut with vibration proof locking device
4. Type 1 base with 7/8" (20mm) sq. x 17 ga. wall galv. tubing (or other base as required)
5. Resistance Weld



PERIMETER CONDITION FOR POSILOCK SYSTEM

