

## SPECIFICATIONS

### General information

- Plank Hardwood weight : 3.07 lbs/ft<sup>2</sup>
- 7.48" wide by 59" to 90" long random length planks with micro-bevel
- 5/32" thick A/B grade white oak hardwood on a 15/32" plywood backer board with .04" magnetic backing
- Available with the following shades:

- |  |  |
|--|--|
| ● Light Brushed                        | ● Brushed                                  |
| <input type="checkbox"/> Rovere-Puro   | <input type="checkbox"/> Citta Della Pieve |
| <input type="checkbox"/> Tamarindo     | <input type="checkbox"/> Ostuni            |
| <input type="checkbox"/> Tortora       | <input type="checkbox"/> Pienza            |
| <input type="checkbox"/> Biancospino   | <input type="checkbox"/> Fiesole           |
| <input type="checkbox"/> Montblanc     | ● Saw Cut                                  |
| <input type="checkbox"/> Testa Di Moro | <input type="checkbox"/> San Gimignano     |
|  | <input type="checkbox"/> Montalcino        |
|  | <input type="checkbox"/> Bagno Vignoni     |

- **Site conditions must be maintained at a constant temperature of 50° F to 86° F and Relative Humidity of 40% to 60% without drastic changes. This is required prior to, during and after installation**

## EXPANSION JOINTS

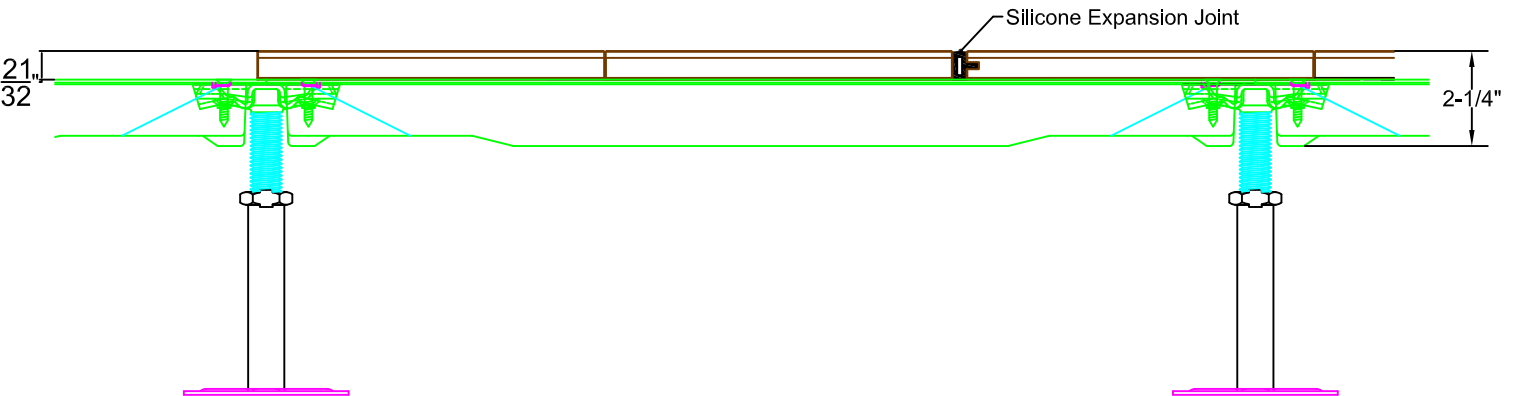
Color matched silicone expansion joints are required every 50' in width and every 100' in length of planks and around the entire perimeter of the installation

## SEALERS

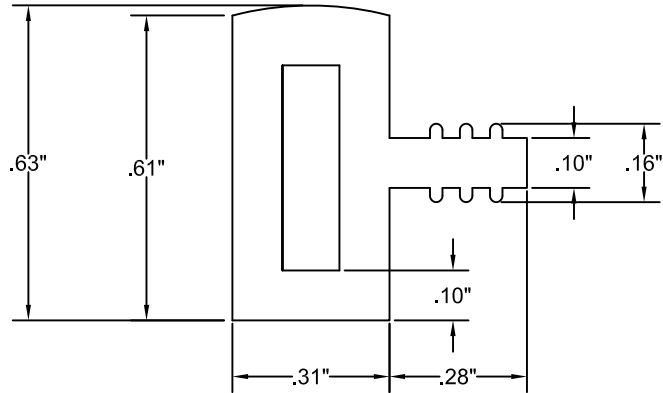
Attiro Plank Hardwood is pre-finished at the factory with Oleonature oil based finish

## COMPATIBLE ACCESS FLOOR SYSTEM

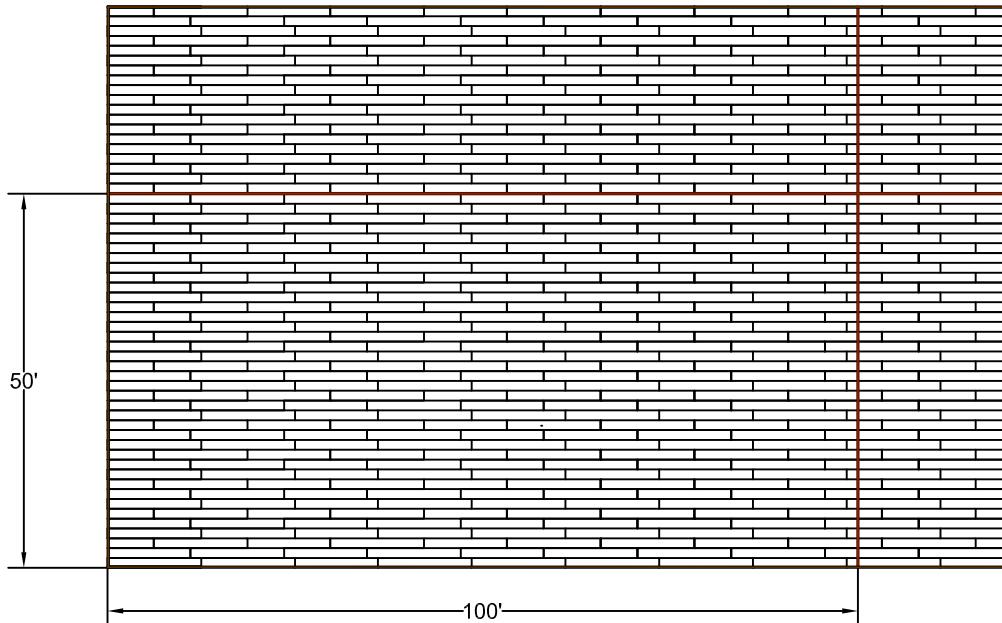
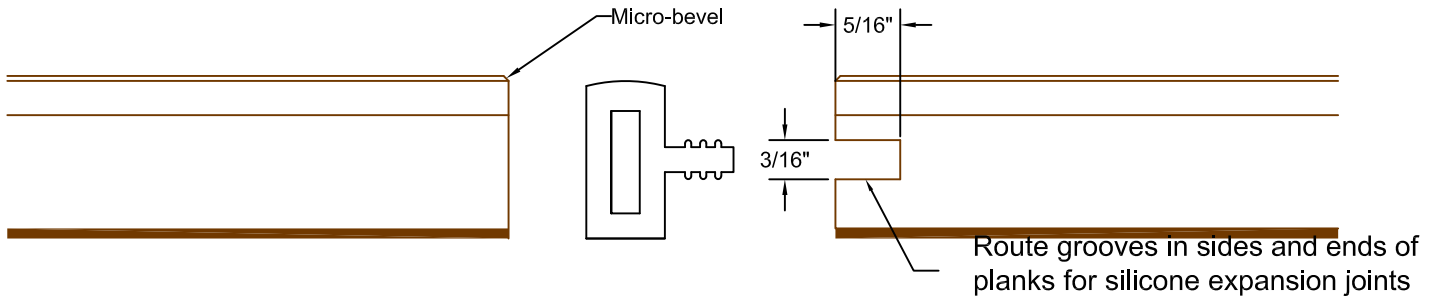
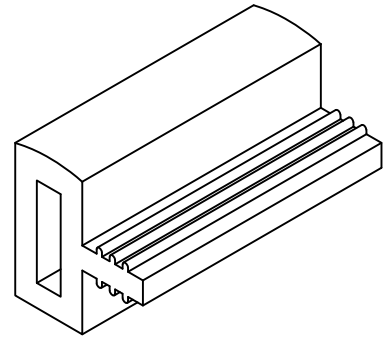
- Panels: ConCore 1000, 1250 or 1500 bare panels. Refer to bare panel data sheets for additional information
- Understructure:
  - Posilock System
  - Low Finished Floor Height Posilock System
  - Bolted Stringer/Cornerlock Combo System
  - Low Finished Floor Height Bolted Stringer/Cornerlock Combo System



Tate reserves the right to amend product information without prior notice. Care has been taken to ensure that the contents of this publication are accurate, but Tate, its parent company and its subsidiary companies do not accept responsibility for errors or information that is found to be misleading or outdated. Suggestions for, or descriptions of, technical specifications and the end user or application of products are provided and must be verified prior to use. To ensure you are viewing the most recent and accurate product information, please scan the QR code.



**Silicone Expansion Joint**



5/16" wide color matched silicone expansion joints are required every 50' in width and every 100' in length of planks and around entire perimeter of installation

