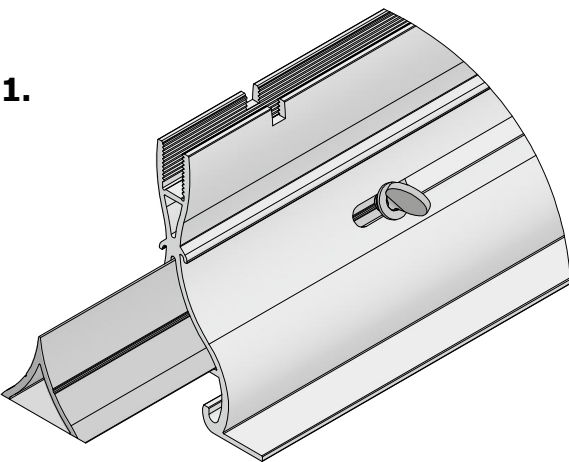
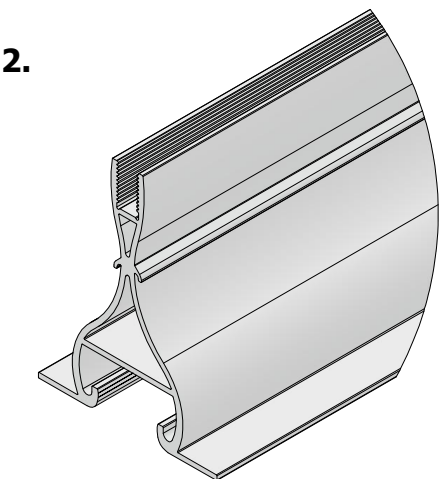


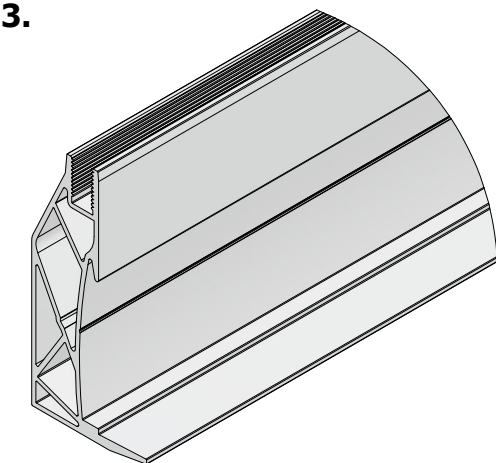
No.	SHEET DETAIL	SHEET NUMBER
1	Tate Forte LEC	4
2	Typical Connection - Perimeter	5
3	Typical Connection - Corner	6
4	Typical Connection - XL	7
5	Typical Connection - XL (Splice Connection)	8
6	Typical Connection - Straight	9
7	Tate Forte LEC Fixed Perimeter	10
8	Tate Forte LEC Fixed Perimeter (Column)	11
9	Configuration of Ceiling Tiles	12
10	Metal Tile Clips	13



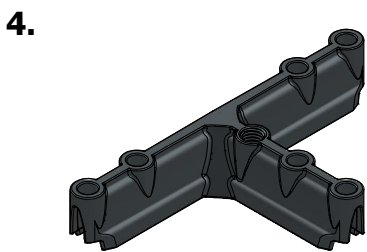
**TATE FORTE LEC  
MAIN RUNNER ASSEMBLY  
(3.6M WITH SPLICE)**



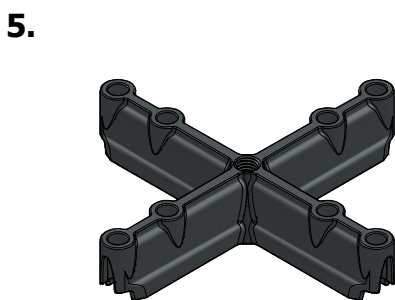
**TATE FORTE LEC  
CROSS TEE EXTRUSION  
(1.2M OR 0.6M)**



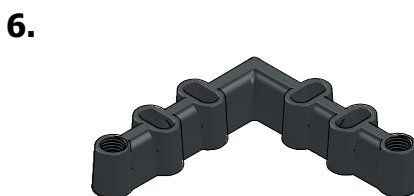
**TATE FORTE LEC  
PERIMETER EXTRUSION  
(3.6M)**



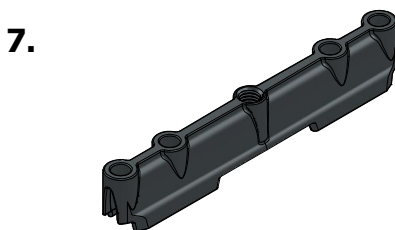
**PERIMETER CONNECTOR**



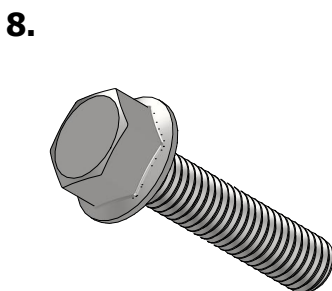
**XL CONNECTOR**



**CORNER CONNECTOR**



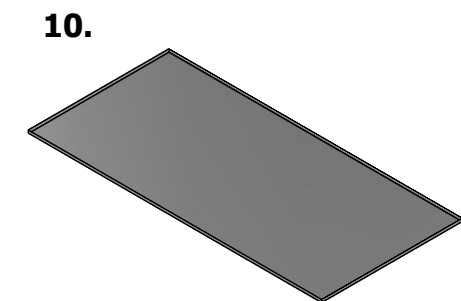
**STRAIGHT CONNECTOR**



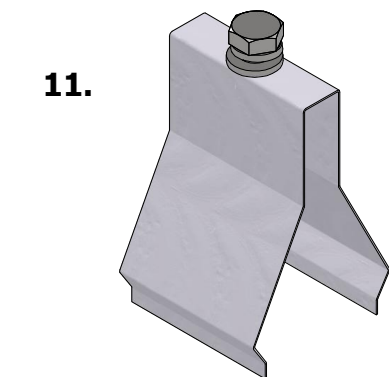
**SCREW M8-35 DIN 6921**



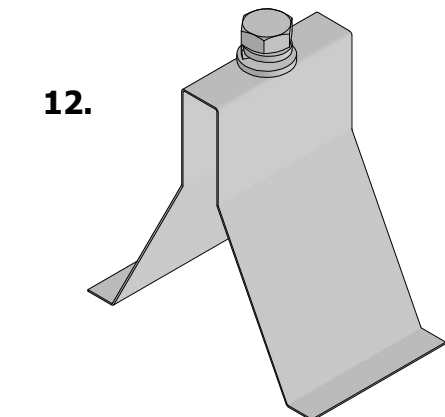
**M10 TURNBUCKLE  
ASSEMBLY**



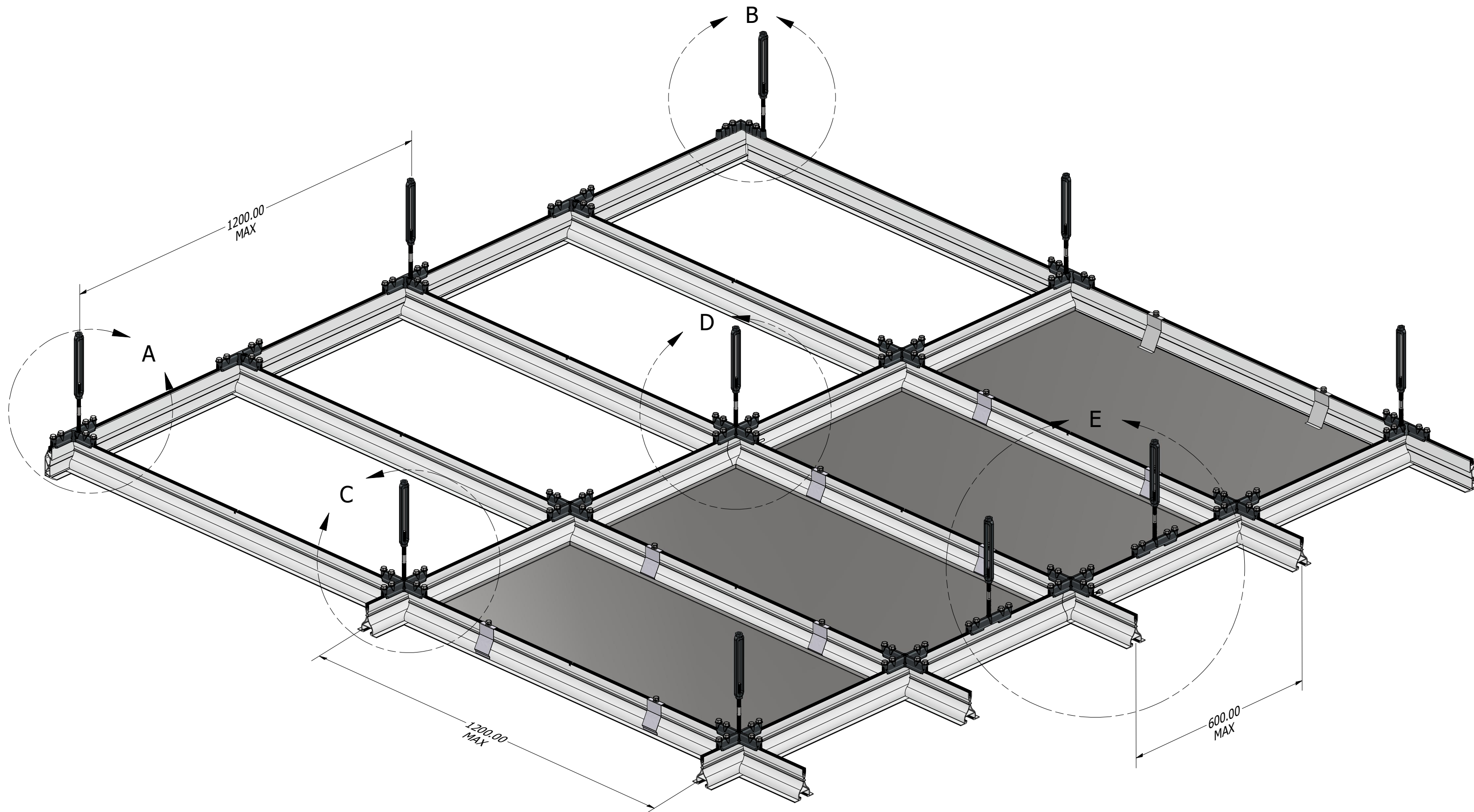
**TATE FORTE LEC  
CEILING TILE  
(1153x553)**

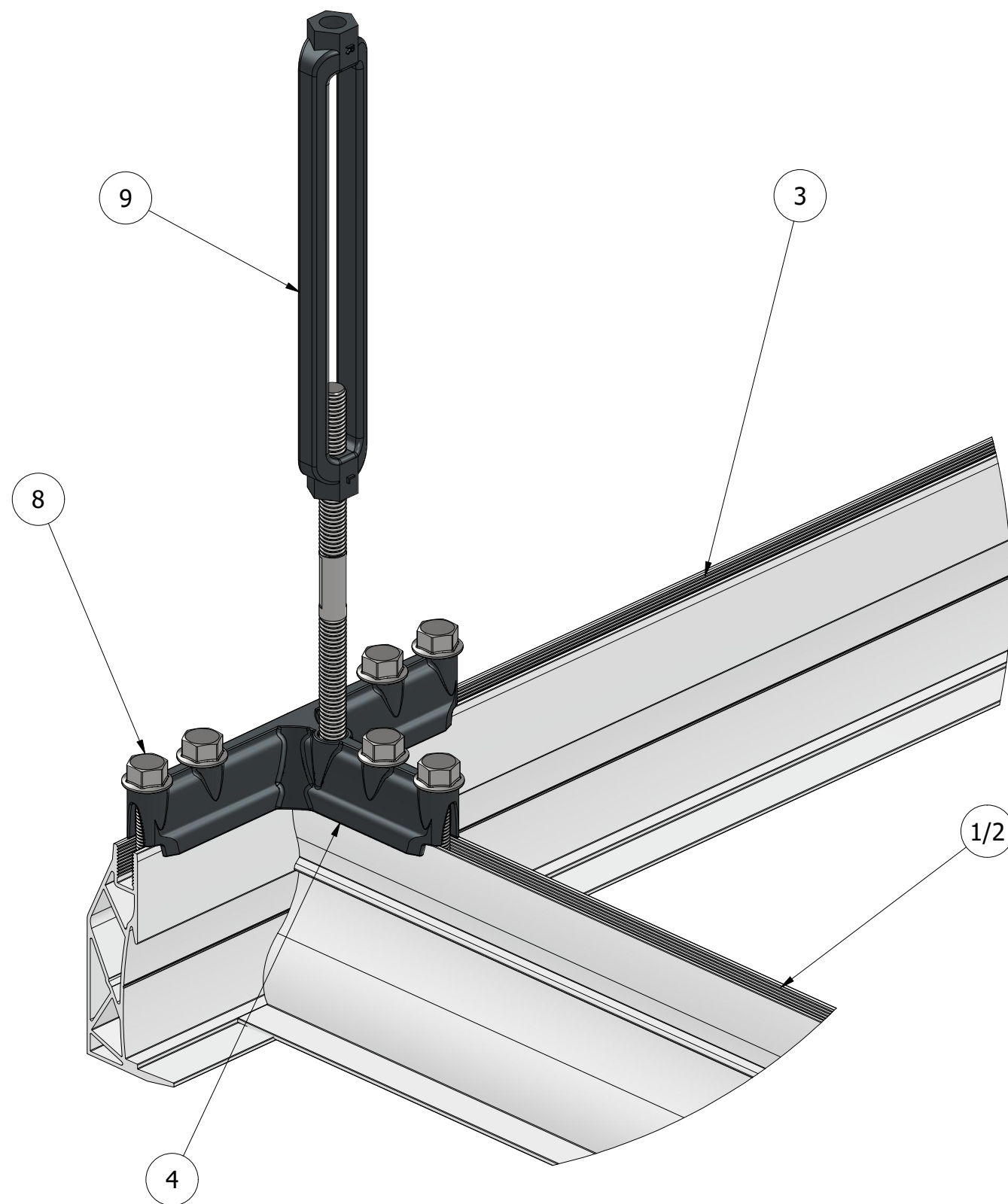


**TATE FORTE LEC  
ACCESSIBILITY SCREW CLIP**



**TATE FORTE LEC  
SECURITY HOLD DOWN CLIP**





DETAIL A  
SCALE 1:2

## TATE FORTE LEC CONNECTOR

**Type:** Perimeter

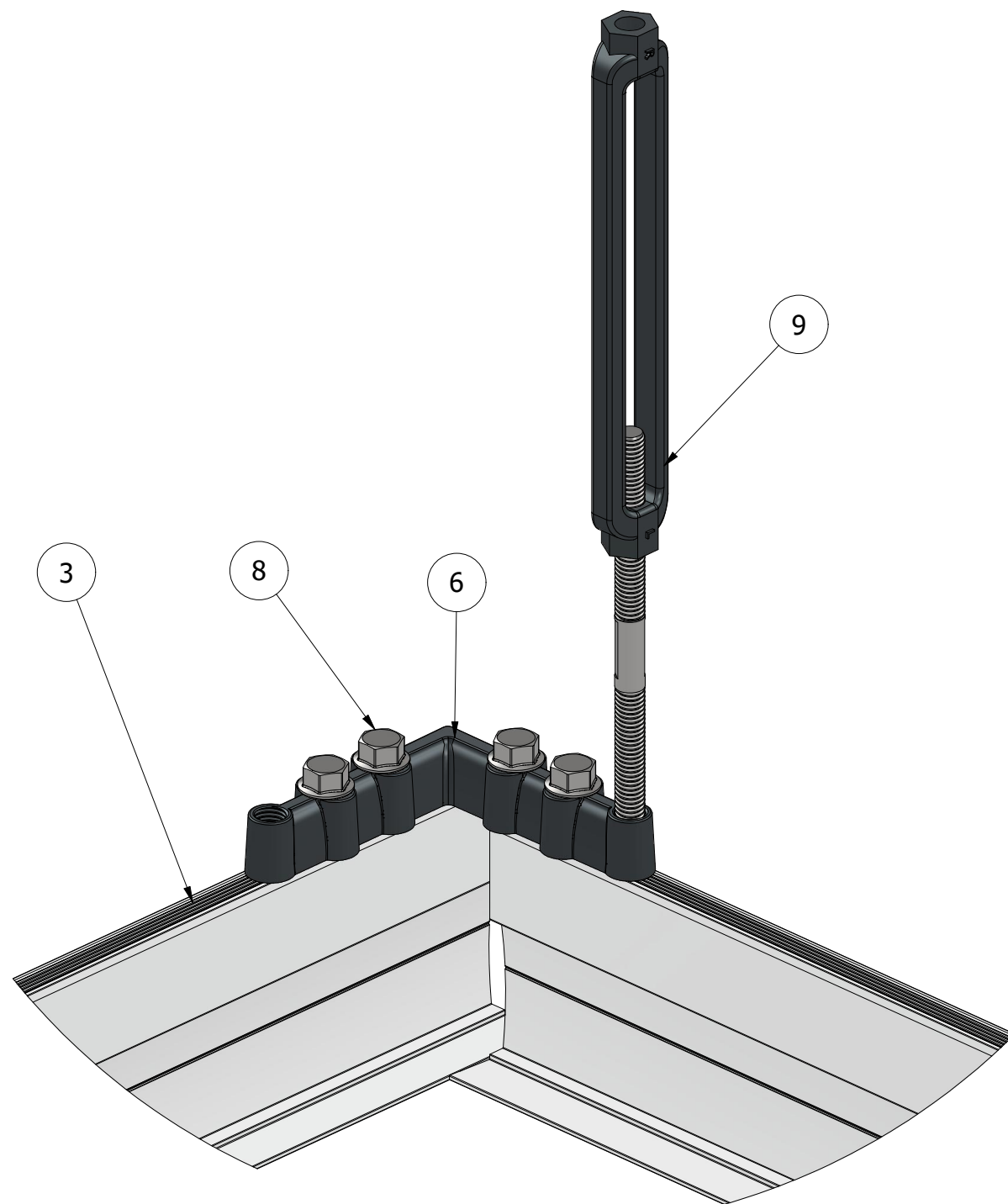
**Junction:** Three Way

**Used for:** Creating a connection between the inner ceiling grid and the perimeter profiles. Both supported & unsupported configurations.

## COMPONENTS

- 1 - Main Runner Extrusion
- 2 - Cross Tee Extrusion
- 3 - Perimeter Extrusion
- 4 - Perimeter Connector
- 8 - Screw M8-35 DIN 6921
- 9 - M10 Turnbuckle Assembly

Tate Forte LEC Main Runner (1) can also be connected in this scenario instead of Cross Tee (2)



DETAIL B  
SCALE 1 / 2

## TATE FORTE LEC CONNECTOR

**Type:** Corner Connection

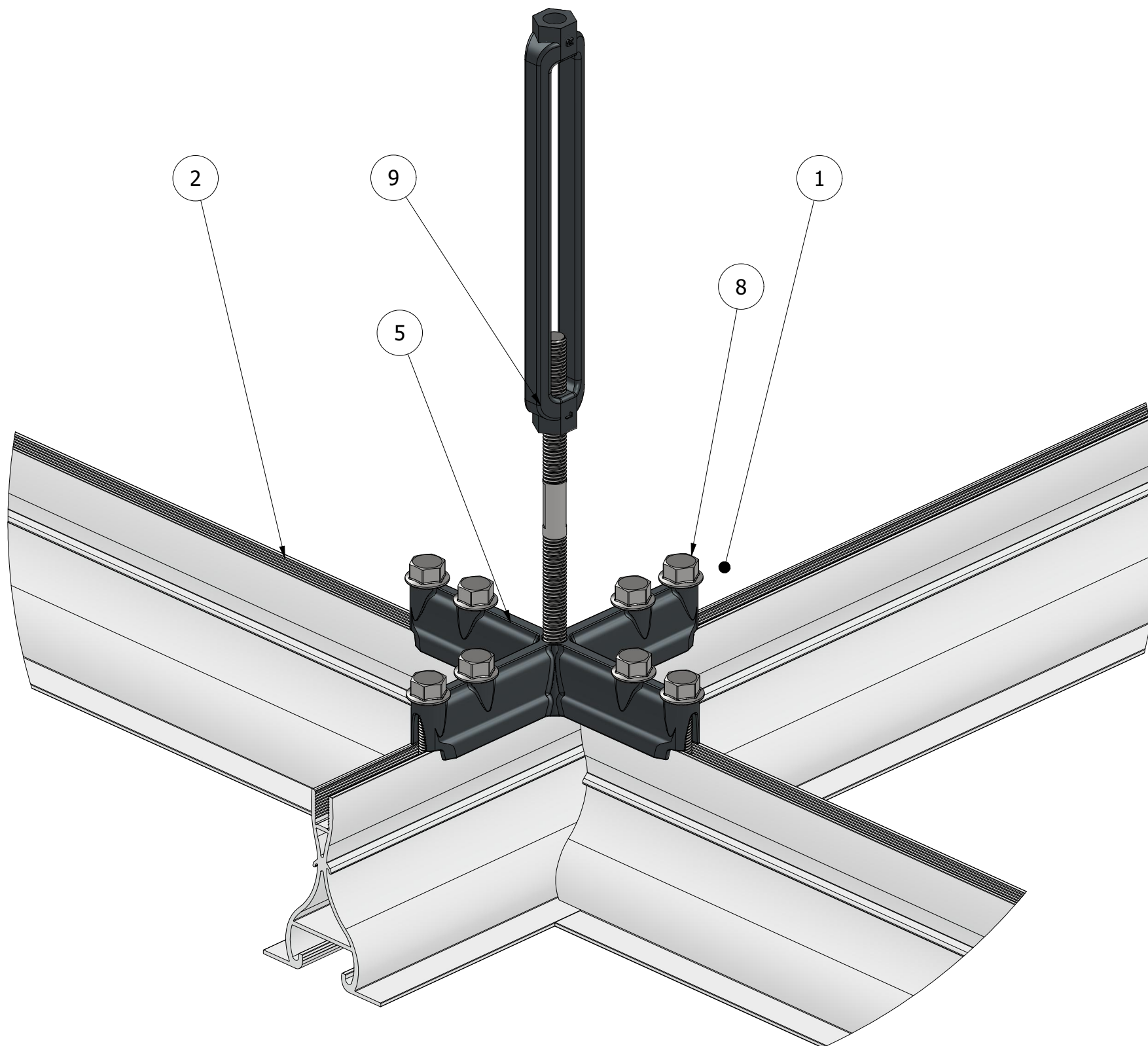
**Junction:** Two Way

**Used for:** Creating a connection at the corners of the ceiling grid. Both supported & unsupported configurations.

## COMPONENTS

- 3 - Perimeter Extrusion
- 6 - Corner Connector
- 8 - Screw M8-35 DIN 6921
- 9 - M10 Turnbuckle Assembly

The drop rod connection can be done in either of the two holes on the connector.



DETAIL C  
SCALE 1 / 2

## TATE FORTE LEC CONNECTOR

**Type:** XL

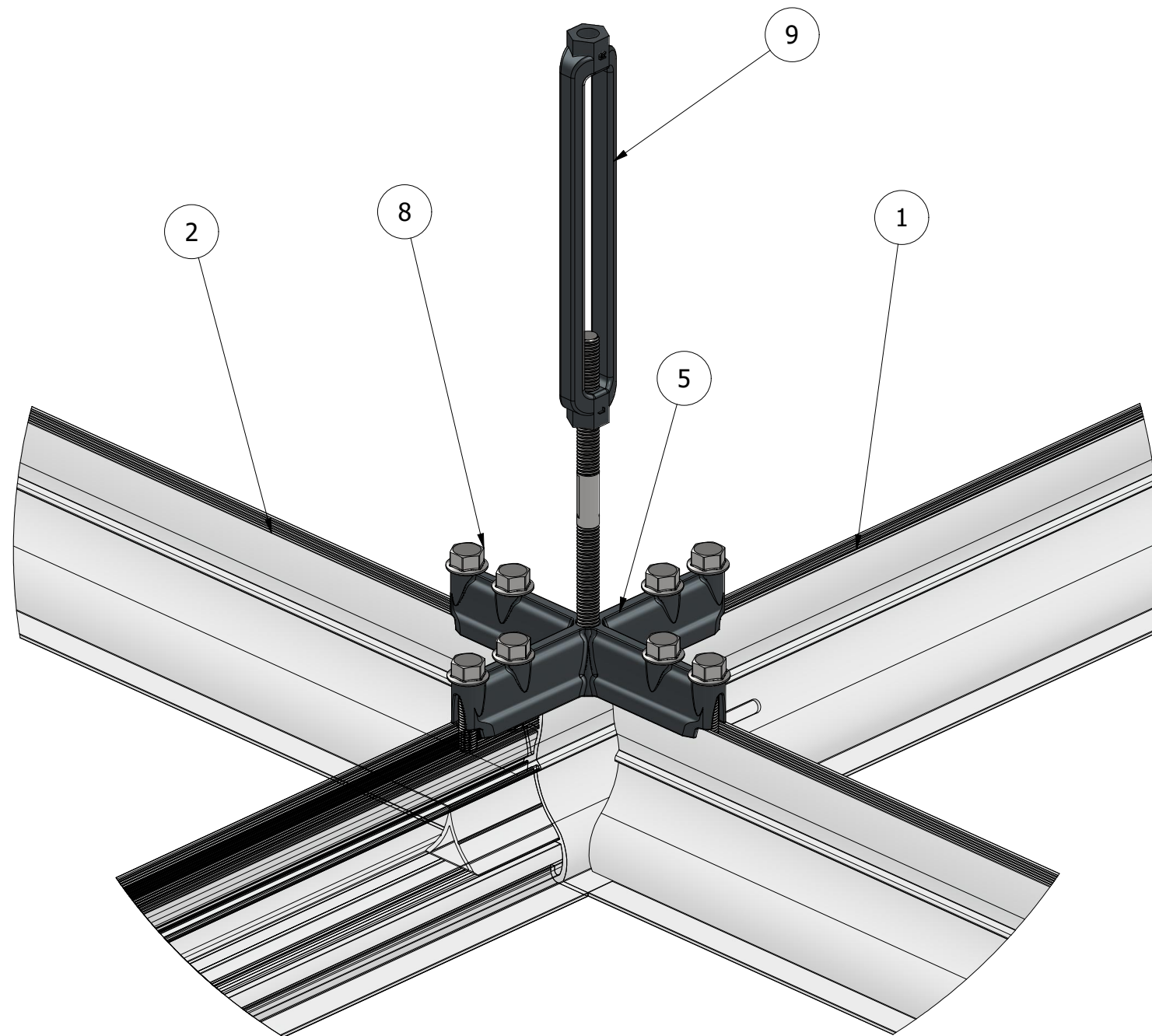
**Junction:** Four Way

**Used for:** Connecting main runners and cross tees at their usual junction point. Both supported & unsupported configurations.

**Note:** Unsupported XL Connector used on 600mm x 600mm Grid Configuration also.

## COMPONENTS

- 1 - Main Runner Extrusion
- 2 - Cross Tee Extrusion
- 5 - XL Connector
- 8 - Screw M8-35 DIN 6921
- 9 - M10 Turnbuckle Assembly



DETAIL D  
SCALE 1 / 2.5

## TATE FORTE LEC CONNECTOR

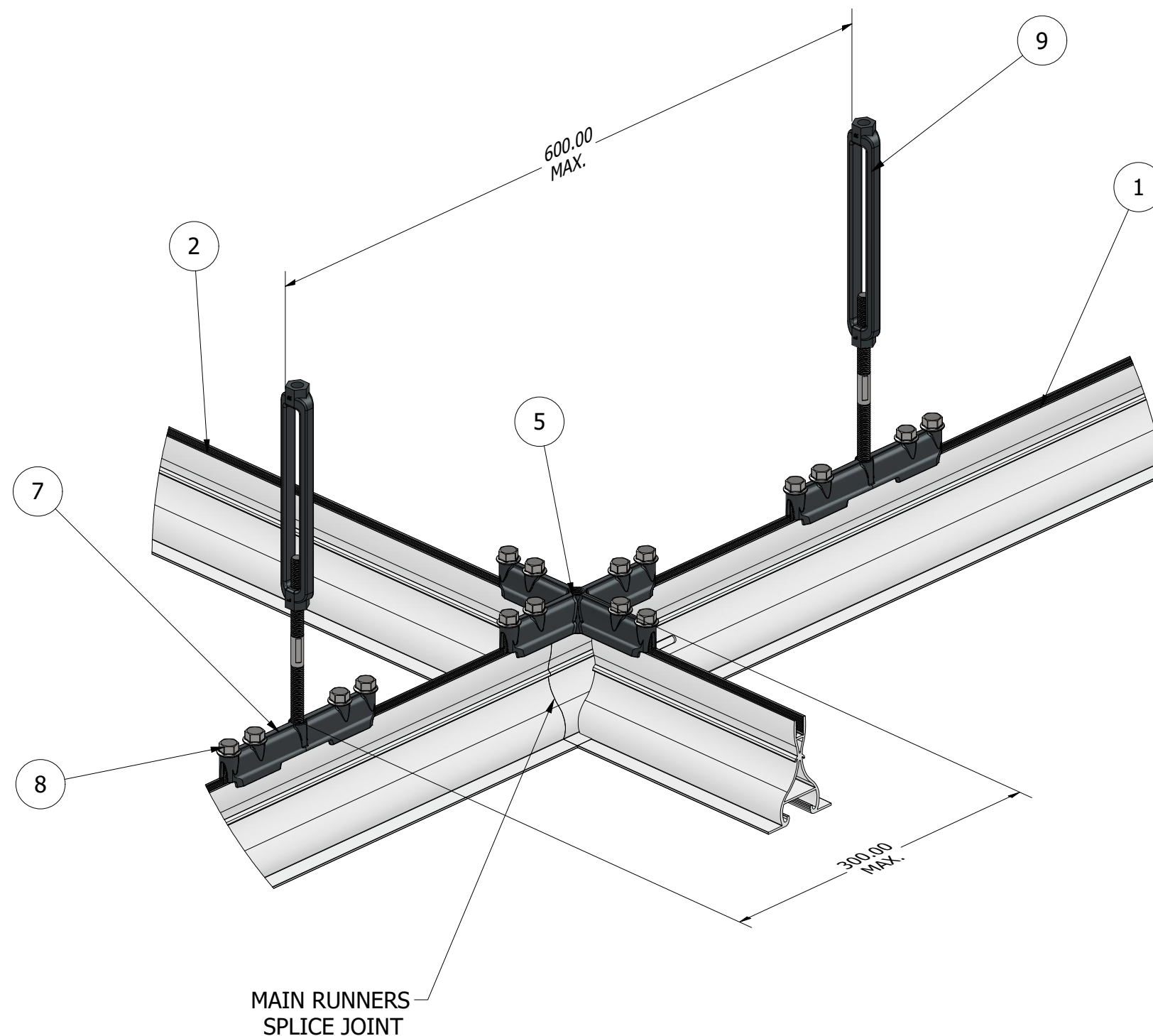
**Type:** XL at Splice

**Junction:** Four Way

**Used for:** Connecting main runners and cross tees at their junction point when it aligns with the splice point between main runners. Both supported & unsupported configurations.

## COMPONENTS

- 1 - Main Runner Extrusion
- 2 - Cross Tee Extrusion
- 5 - XL Connector
- 8 - Screw M8-35 DIN 6921
- 9 - M10 Turnbuckle Assembly



DETAIL E  
SCALE 1 / 4

## TATE FORTE LEC CONNECTOR

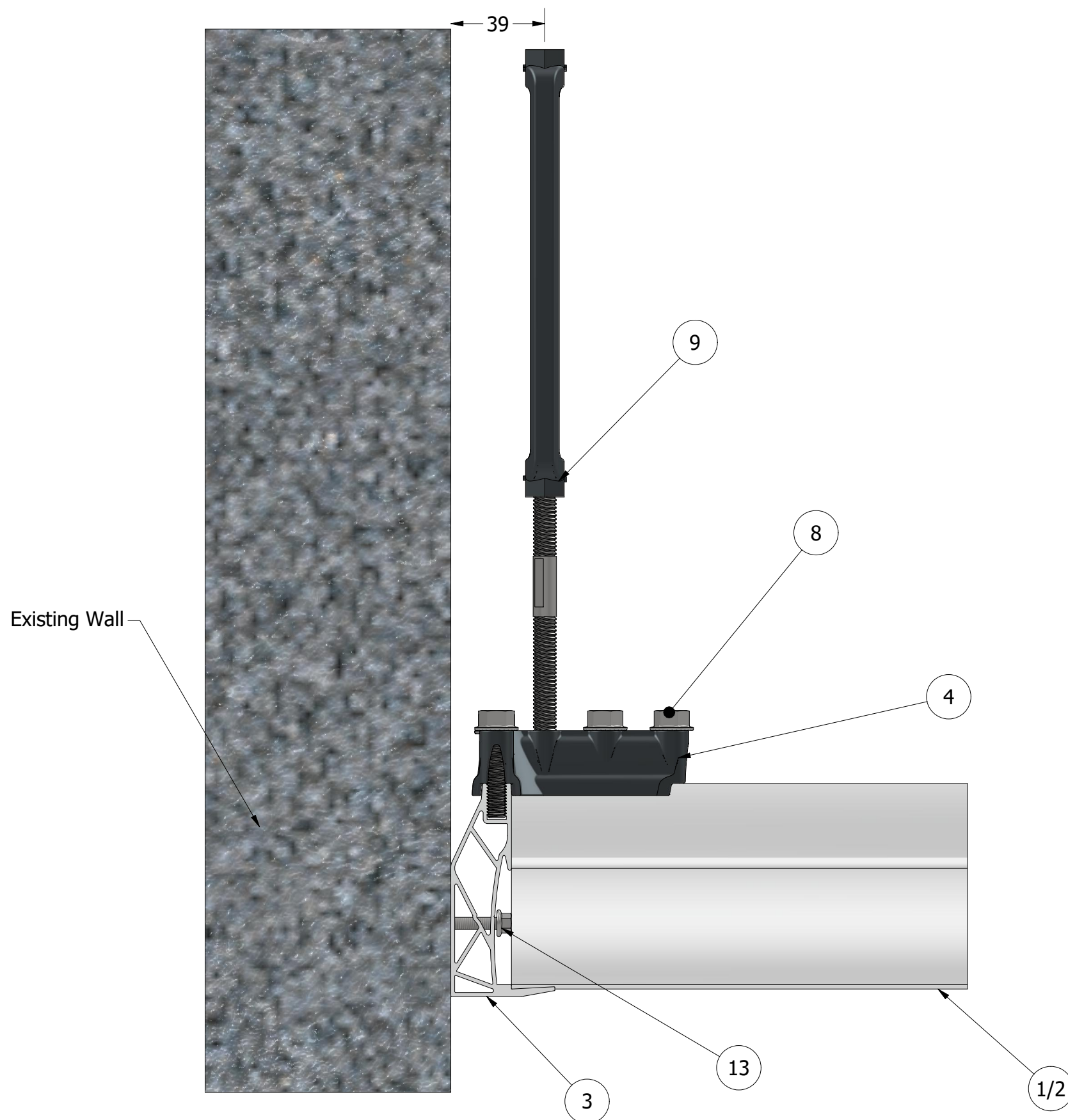
**Type:** Straight

**Junction:** One Way

**Used for:** Connecting two main runners at their splice point or creating a reinforced anchor point as shown. Both supported & unsupported configurations.

## COMPONENTS

- 1 - Main Runner Extrusion
- 2 - Cross Tee Extrusion
- 5 - XL Connector
- 7 - Straight Connector
- 8 - Screw M8-35 DIN 6921
- 9 - M10 Turnbuckle Assembly



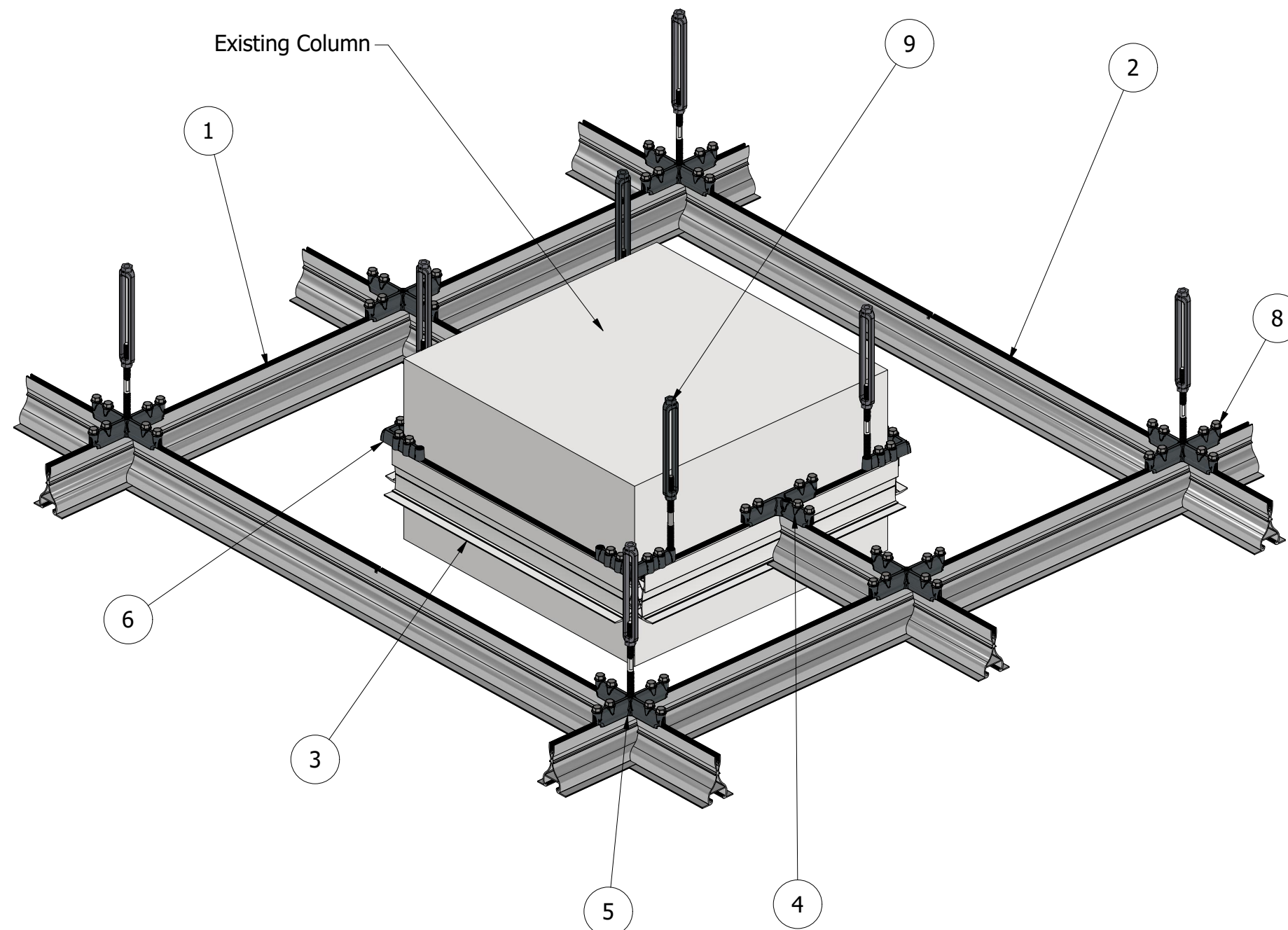
## FIXED PERIMETER TO WALL

A fixed perimeter profile is connected directly to the wall.

## COMPONENTS

- 1 - Main Runner Extrusion
- 2 - Cross Tee Extrusion
- 3 - Perimeter Extrusion
- 4 - Perimeter Connector
- 8 - Screw M8-35 DIN 6921
- 9 - M10 Turnbuckle Assembly
- 13 - Fastener (Supplied by others)

Tate Forte LEC Main Runner (1) can also be connected in this scenario instead of Cross Tee (2)

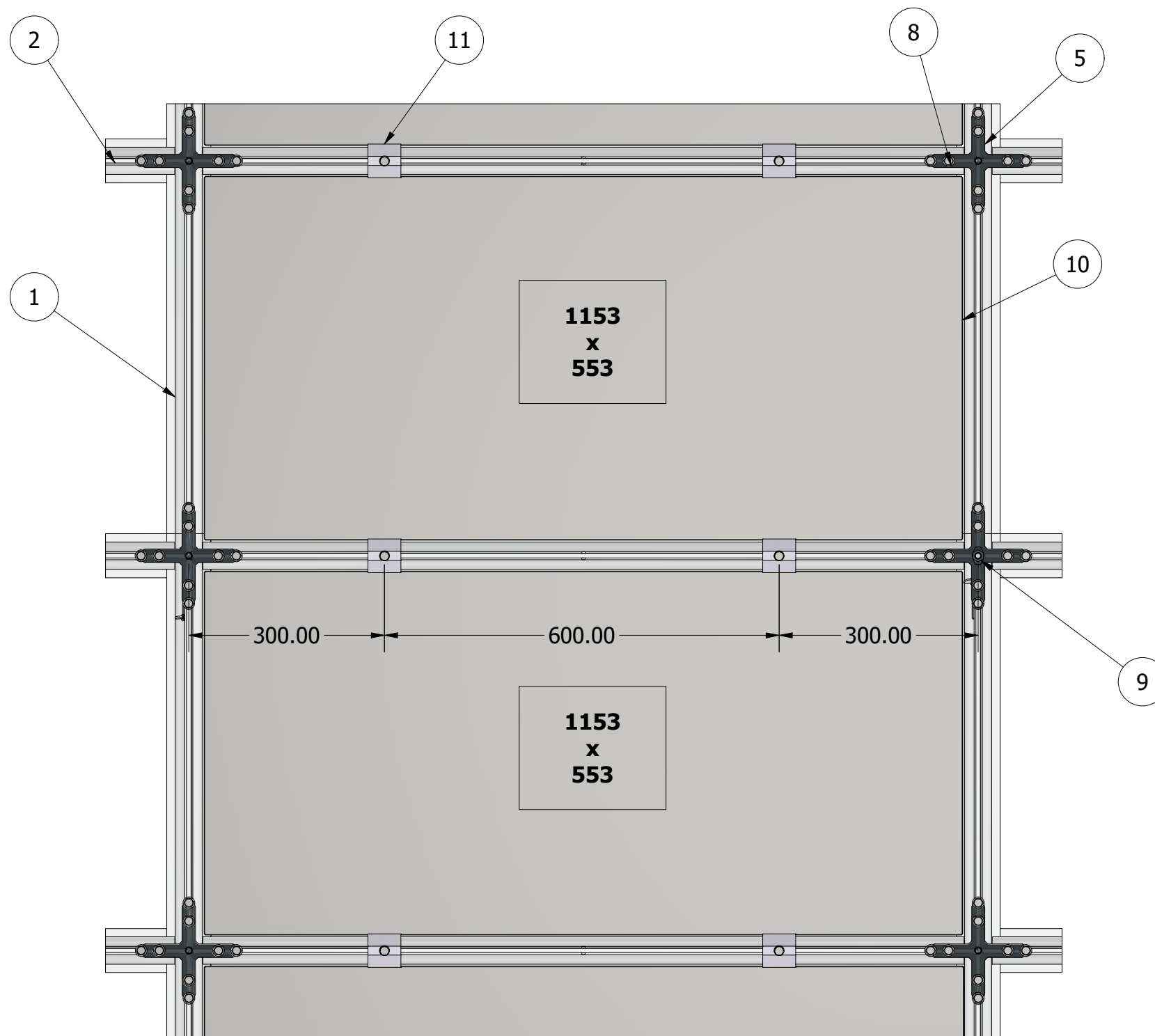


## TATE FORTE LEC FIXED PERIMETER (COLUMN)

A fixed perimeter can be installed around the columns and obstacles. All corners must be supported with a hanger.

### COMPONENTS

- 1 - Main Runner Extrusion
- 2 - Cross Tee Extrusion
- 3 - Perimeter Extrusion
- 4 - Perimeter Connector
- 5 - XL Connector
- 6 - Corner Connector
- 8 - Screw M8-35 DIN 6921
- 9 - M10 Turnbuckle Assembly

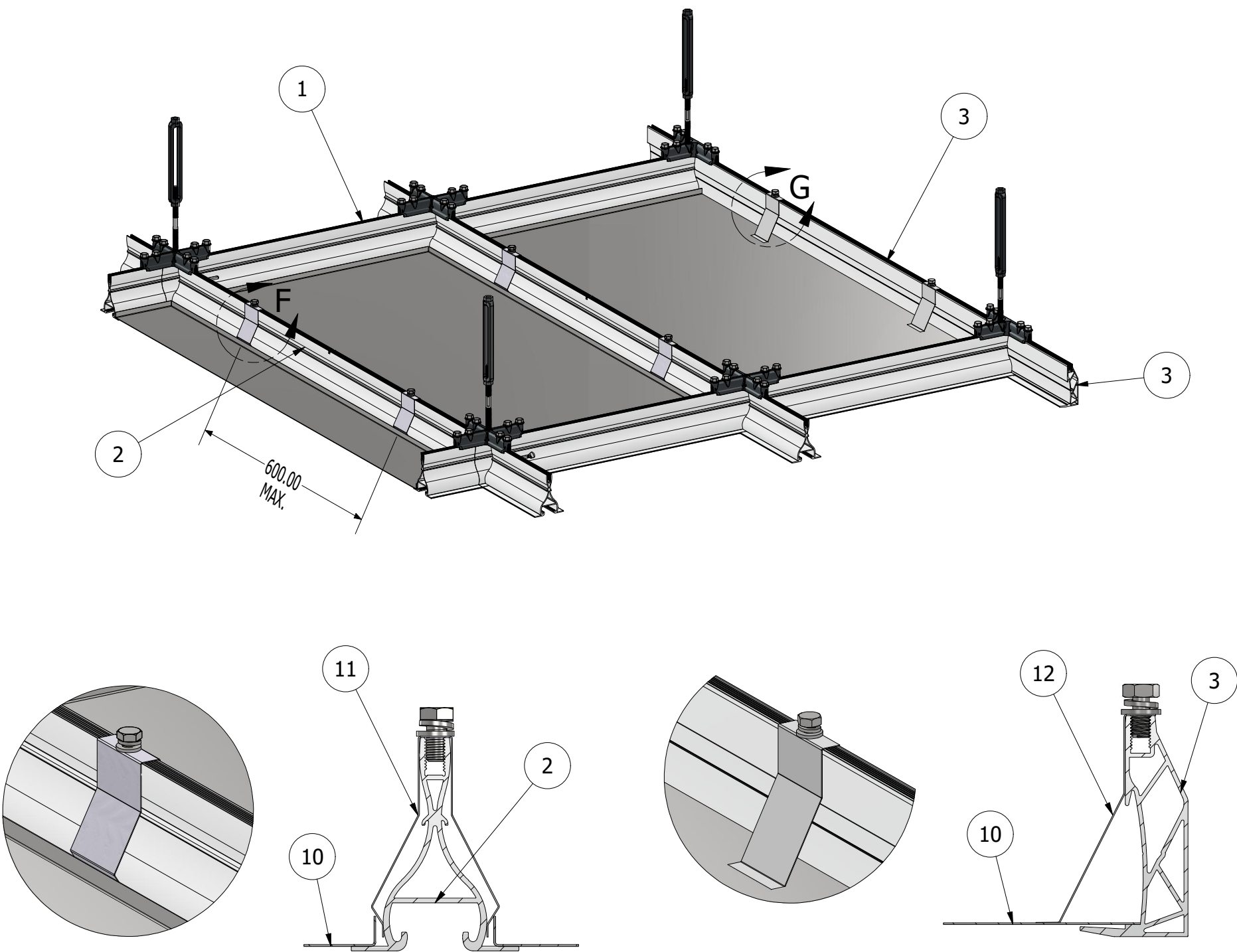


## CONFIGURATION OF CEILING TILES

A usual Tate Forte LEC grid layout is 1200x600 centre to centre of the profile. Tate Forte LEC tiles come in 1153x553 size to fit inside the grid. Metal pan tiles are 0.7mm thick.

## COMPONENTS

- 1 - Main Runner Extrusion
- 2 - Cross Tee Extrusion
- 5 - XL Connector
- 8 - Screw M8-35 DIN 6921
- 9 - M10 Turnbuckle Assembly
- 10 - Ceiling Tile - 1153x553
- 11 - Accessibility Screw Clip



DETAIL F  
SCALE 1 / 3  
ACCESSIBILITY SCREW CLIP  
ON MAIN RUNNER OR CROSS TEE

DETAIL G  
SCALE 1 / 3  
SECURITY HOLD DOWN CLIP  
ON PERIMETER

TATE FORTE LEC CLIPS

**Type:** Accessibility Clip  
**Used for:** Fixing metal tiles. Spring mechanism allows for tiles to be installed and/or removed from below the ceiling

**Type:** Security Hold Down Clip  
**Used for:** Fixing metal tiles. Require installing the clips after the tiles have been laid. Removing the tiles is not possible from below the ceiling. Removing the tiles require prior removal of clips. Used on all edges where the tile has been cut to suit the grid.

COMPONENTS

- 1 - Main Runner Extrusion
- 2 - Cross Tee Extrusion
- 3 - Perimeter Extrusion
- 10 - Ceiling Tile - 1153x553
- 11 - Accessibility Screw Clip
- 12 - Security Hold Down Clip