



SPECIFICATIONS

General information

- Pre-assembled panels and supplied brackets make for quick installation
- Compression gaskets efficiently seal and minimize air leakage
- Custom sized for every job, 4' max width x 8' max height
- Designed to work with ContainAire® Single and Dual Doors
- Sturdy aluminum framing
- Fully supported by server cabinet and ContainAire® Doors, if available
- Hard partitions with multiwall polycarbonate are listed in UL file SA44425

Dimensions

- 48" max width x 96" max height x 1.575" depth



Hassle free installation
(corner detail shown)

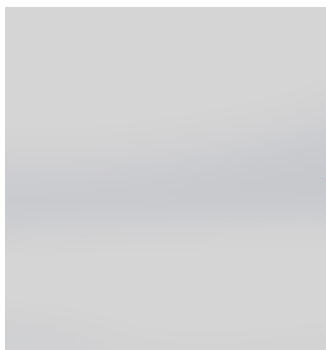
OPTIONS

Panel Options

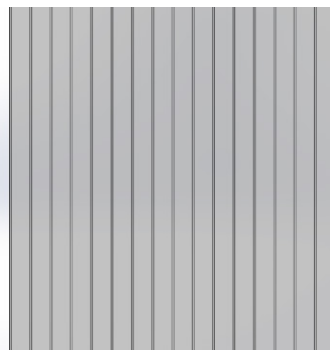
- Clear Polycarbonate
 - Fully transparent
 - 6mm thick with edge sealing gaskets
- Multiwall Polycarbonate: ASTM E84, Class-A
 - Semi-transparent
 - 8mm thick
- Dibond
 - Opaque Black ACM
 - 3mm thick

Aluminum Extrusion Finish Options

- ☐ Black Painted
- ☐ Gray Painted
- ☐ White Painted



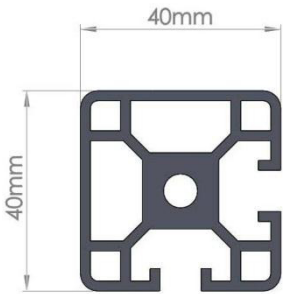
Polycarbonate
Clear/Transparent



Polycarbonate
Semi-transparent/Multiwall

INCLUDED COMPONENTS

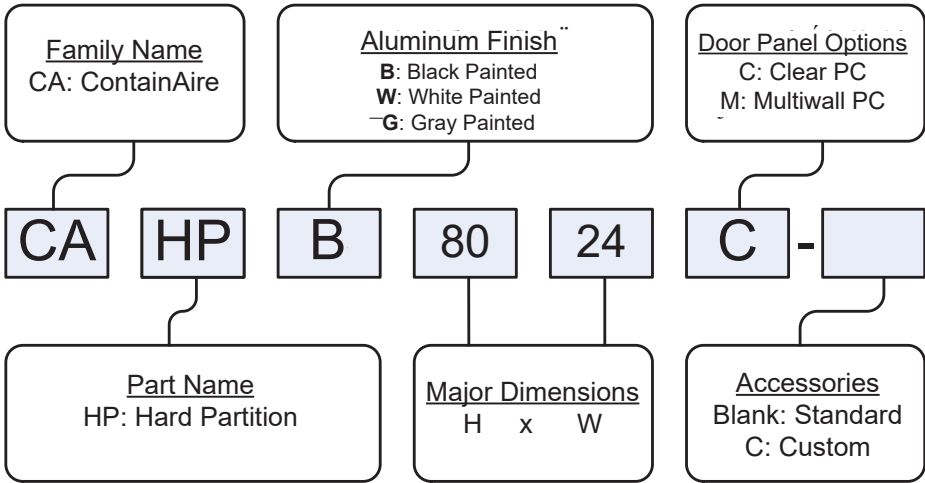
- Hard Partition
- Mounting hardware
- Foam gasket with adhesive back
- Installation guide



Custom Extrusion Profile

Typical Hard Partition installation with aisle end
Single Door option

PART NUMBERS



Tate reserves the right to amend product information without prior notice. Care has been taken to ensure that the contents of this publication are accurate, but Tate, its parent company and its subsidiary companies do not accept responsibility for errors or for information that is found to be misleading or outdated. Suggestions for, or description of, technical specifications and the end use or application of products are provided in good faith and should be verified prior to use. To ensure you are viewing the most recent and accurate product information, please scan the QR code.

For more information please contact Tate, Inc. 7510 Montevideo Road, Jessup, MD 20794 / T:410-799-4200 / E: info@tateinc.com / W: tateinc.com