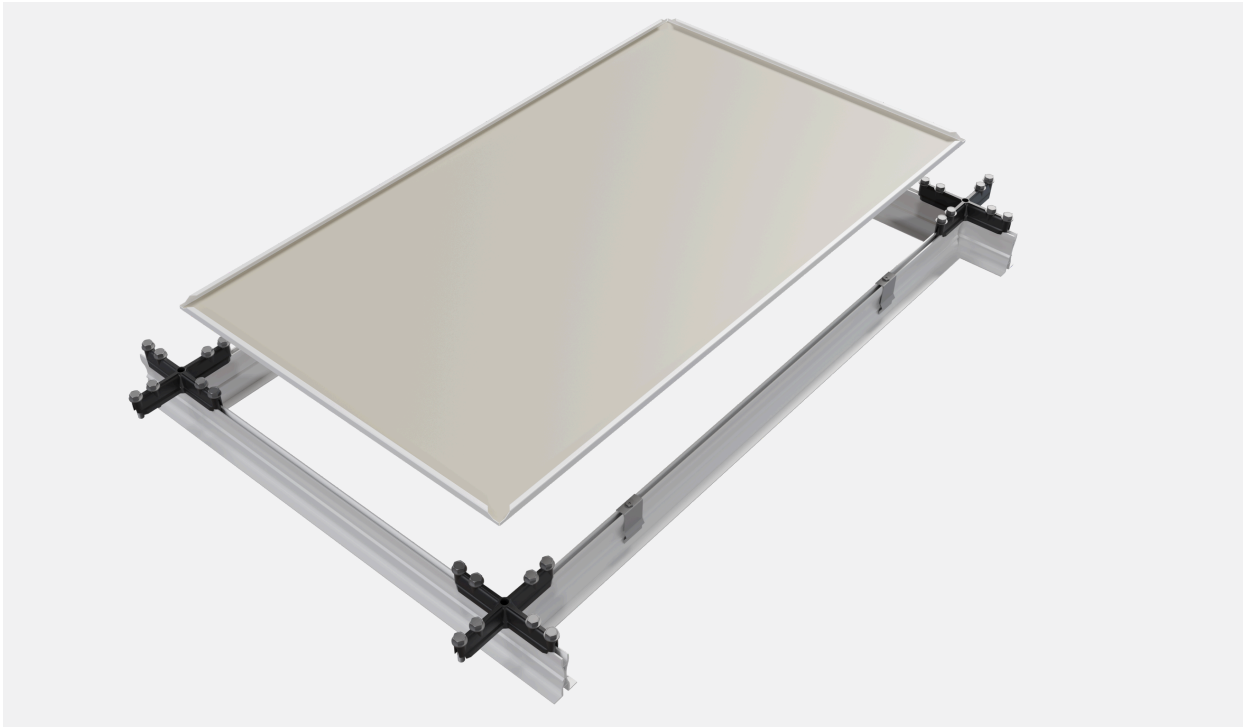


Tate Grid+ LEC Metal Ceiling Tile



Main Characteristics

Dimensions - 1177 x 577 x 0.7mm

Weight - 3.91kg

Thickness - 0.7mm

Material - Galvanised pre-painted steel

Front Colour - RAL 9016

Back Finish - Unpainted Treated Steel

Fire classification - AS5637.1

Security hold down clips optional

Factory applied gasket optional

*The metal pan ceiling tile is designed exclusively for the Tate Grid+ LEC structural ceiling systems. Suitable for data centre applications, the metal pan ceiling tile offers a clean finish to the structural ceiling systems. LEC refers to the ceiling grid only, not the tile.

Contact our technical team for support: T: (02) 9612 2300, E: info@tateapac.com

Tate Asia - Pacific Pty Ltd
Level 12, 100 George Street, Parramatta NSW 2150
tateglobal.com

Please note we reserve the right to change specification or design and supply products which may differ from those described and illustrated without notice and without liability. 08/2025

Tate.[®]