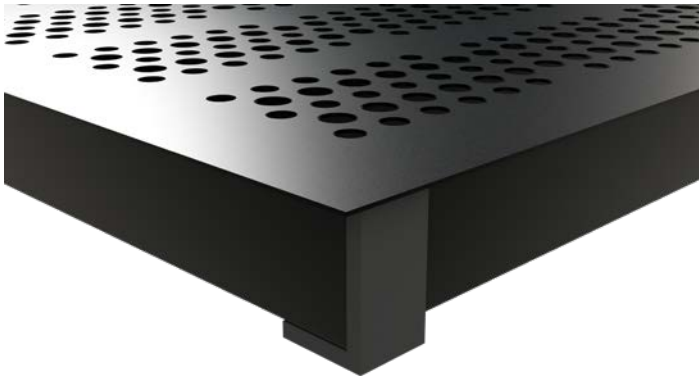


Aero S

The steel ventilation panels consist of a perforated cover plate with square tubes welded onto the underside as frame and cross struts. The frame profiles are closed with PE caps with or without height compensation. Optionally, either continuously adjustable volume regulators, dampers with an open cross-section of 6% can be installed. Surface finish: powder coated. Electrogalvanising is available at customer request.



Steel Ventilation Panel

33.5 to 44.5 mm
thickness and
15% open area

38.5 mm
thickness and
15% open area

28.5 to 44.5 mm
thickness and
24% open area

28.5 to 44.5 mm
thickness and
24% open area

33.5 to 39.5 mm
thickness and
38% open area

Page 2

Page 3

Page 4

Page 5

Page 6



Tate.®

Tate Global GmbH

Zum Stadion 4, 63808 Haibach, Germany

T: +49 (0) 6021 63949-0 E: infoDE@tateglobal.com W: tateglobal.com/de

© 2025 Tate Global GmbH.

Tate Global GmbH reserves the right to amend or add to the product specifications without prior notice as part of our commitment to continuous improvements and the observance of legal changes.

tate-ferra-solid-aero-s-en-de-v2 1/2026



#planetpassionate

Steel VP with a thickness of 33.5 to 44.5 mm and a 15% open area

Panel Properties

Dimensions	600 x 600 mm
Thickness	33.5 to 44.5 mm
Weight per panel	approx. 13.8 to 15.20 kg
Open area	15%
Hole diameter	Ø 8 mm
Building material class	A1
Panel top side	Application of surface coverings ex works



Panel Performance (DIN EN 12825: 2002)

	Panel thickness 33.5 mm	Panel thickness 38.5 mm	Panel thickness 39.5 mm	Panel thickness 44.5 mm
Thickness cover plate	3mm	3mm	4mm	4mm
Ultimate load	> 10 kN	> 12 kN	>18 kN	> 30 kN
Working load	5 kN	6 kN	9 kN	15 kN
Element class	5	6	6	6
Safety factor	2.0	2.0	2.0	2.0
Deflection class	A	B	C	C
Permanent deflection	< 0,5 mm	> 0,5 mm	< 0,5 mm	> 0,5 mm

tested on solid Ø 90 steel cylinders

Tate.®

Tate Global GmbH

Zum Stadion 4, 63808 Haibach, Germany

T: +49 (0) 6021 63949-0 E: infoDE@tateglobal.com W: tateglobal.com/de

© 2025 Tate Global GmbH.

Tate Global GmbH reserves the right to amend or add to the product specifications without prior notice as part of our commitment to continuous improvements and the observance of legal changes.

tate-ferra-solid-aero-s-en-de-v2 1/2026



#planetpassionate

Steel VP with a thickness of
38.5 mm and a 15% open area

Panel Properties

Dimensions	600 x 600 mm
Thickness	38.5 mm
Weight per pane	approx. 13.7 kg
Open area	15%
Hole diameter	Ø 8 mm
Building material class	A1
Panel top side	Application of surface coverings ex works



Panel Performance (DIN EN 12825: 2002)

	Panel thickness 38.5 mm
Thickness cover plate	3 mm
Ultimate load	> 12 kN
Working load	6 kN
Element class	6
Safety factor	2.0
Deflection class	B
Substructure	M20-SR6 pedestal PH: 390 mm
Permanent deflection	< 0,5 mm

Substructure

Pedestal dimensions of at least M16 to M20 may be required depending on the required installation height. Optional stringers/cross bars may also be required. For more information about these requirements, please contact our technical team.

Tate.®

Tate Global GmbH

Zum Stadion 4, 63808 Haibach, Germany

T: +49 (0) 6021 63949-0 E: infoDE@tateglobal.com W: tateglobal.com/de

© 2025 Tate Global GmbH.

Tate Global GmbH reserves the right to amend or add to the product specifications without prior notice as part of our commitment to continuous improvements and the observance of legal changes.

tate-ferra-solid-aero-s-en-de-v2 1/2026



#planetpassionate



Steel VP with 28.5 to 44.5 mm thickness and 24% open area

Panel Properties	
Dimensions	600 x 600 mm
Thickness	28.5 to 44.5 mm
Weight per panel	approx 11.7 to 17 kg
Open area	24%
Hole diameter	Ø 10 mm
Building material class	A1
Panel top side	Application of surface coverings ex works



Panel performance (DIN EN 12825:2002)						
Panel thickness	28,5 to 33 mm	34,5 mm	38,5 mm	39,5 mm	39,5 mm	44,5 mm
Thickness cover plate	3,0 mm	4,0 mm	3,0 mm	4,0 mm	4,0 mm	4,0 mm
Ultimate load	> 8 kN	> 12 kN	> 10 kN	> 12 kN	> 12 kN	> 16 kN
Working load	4 kN	6 kN	5 kN	6 kN	6 kN	8 kN
Element class	3	6	5	6	6	6
Safety factor	2	2	2	2	2	2
Deflection class	B	B	A	B	B	B

Tested on solid Ø 90 steel cylinders. The permanent deflection were complied with in accordance with DIN EN 12825:2002

Tate.[®]

Tate Global GmbH

Zum Stadion 4, 63808 Haibach, Germany

T: +49 (0) 6021 63949-0 E: infoDE@tateglobal.com W: tateglobal.com/de

© 2025 Tate Global GmbH.

Tate Global GmbH reserves the right to amend or add to the product specifications without prior notice as part of our commitment to continuous improvements and the observance of legal changes.

tate-ferra-solid-aero-s-en-de-v2 1/2026



#planetpassionate



Steel VP with 28.5 to 44.5 mm thickness and 24% open area

Panel Properties	
Dimensions	600 x 600 mm
Thickness	28.5 to 44.5 mm
Weight per panel	approx 11.7 to 17 kg
Open area	24%
Hole diameter	Ø 10 mm
Building material class	A1
Panel top side	Application of surface coverings ex works



Panel performance (DIN EN 12825:2002)				
Panel thickness	33,5 mm	33,5 mm	34,5 mm	39,5 mm
Thickness cover plate	3,0 mm	3,0 mm	4,0 mm	4,0 mm
Ultimate load	> 8 kN	> 8 kN	>14 kN	>16 kN
Working load	4 kN	4 kN	7 kN	8 kN
Element class	3	3	6	6
Safety factor	2	2	2	2
Deflection class	A	B	C	C
Substructure	M16-SR3 Pedestal PH: 290 mm	M20-SSL6 Pedestal PH: 740 mm with C-Profile 40x40x2 mm	M20-SSL6 Pedestal PH: 650 mm with C-Profile 40x40x2 mm	M20-SSP6 Pedestal PH: 900 mm with C-Profile 40x40x2 mm

The permanent deflection were complied with in accordance with DIN EN 12825:2002

Tate.[®]

Tate Global GmbH
 Zum Stadion 4, 63808 Haibach, Germany
 T: +49 (0) 6021 63949-0 E: infoDE@tateglobal.com W: tateglobal.com/de

© 2025 Tate Global GmbH.
 Tate Global GmbH reserves the right to amend or add to the product specifications without prior notice as part of our commitment to continuous improvements and the observance of legal changes.

tate-ferra-solid-aero-s-en-de-v2 1/2026

 **PLANET
PASSIONATE**
[#planetpassionate](https://planetpassionate.com)



Steel VP with a thickness of 33.5 to 39.5 mm and a 38% open area

Panel Properties

Dimensions	600 x 600 mm
Thickness	33.5 to 39.5 mm
Weight per panel	approx 11.6 to 13.40 kg
Open area	38%
Hole diameter	Ø 12 mm
Building material class	A1
Panel top side	Application of surface coverings ex works



Panel Performance (DIN EN 12825: 2002)

	Panel thickness 33.5 mm	Panel thickness 34.5 mm	Panel thickness 39.5 mm
Ultimate load	> 6 kN	> 10 kN	> 12 kN
Working load	3 kN	5 kN	6 kN
Element class	2	5	6
Safety factor	2.0	2.0	2.0
Deflection class	A	B	B
Permanent deflection	< 0,5 mm	< 0,5 mm	> 0,5 mm

tested on solid Ø 90 steel cylinders

Tate.®

Tate Global GmbH
Zum Stadion 4, 63808 Haibach, Germany
T: +49 (0) 6021 63949-0 E: infoDE@tateglobal.com W: tateglobal.com/de

© 2025 Tate Global GmbH.
Tate Global GmbH reserves the right to amend or add to the product specifications without prior notice as part of our commitment to continuous improvements and the observance of legal changes.
tate-ferra-solid-aero-s-en-de-v2 1/2026

 **PLANET
PASSIONATE**
[planetpassionate](https://www.planetpassionate.com)