

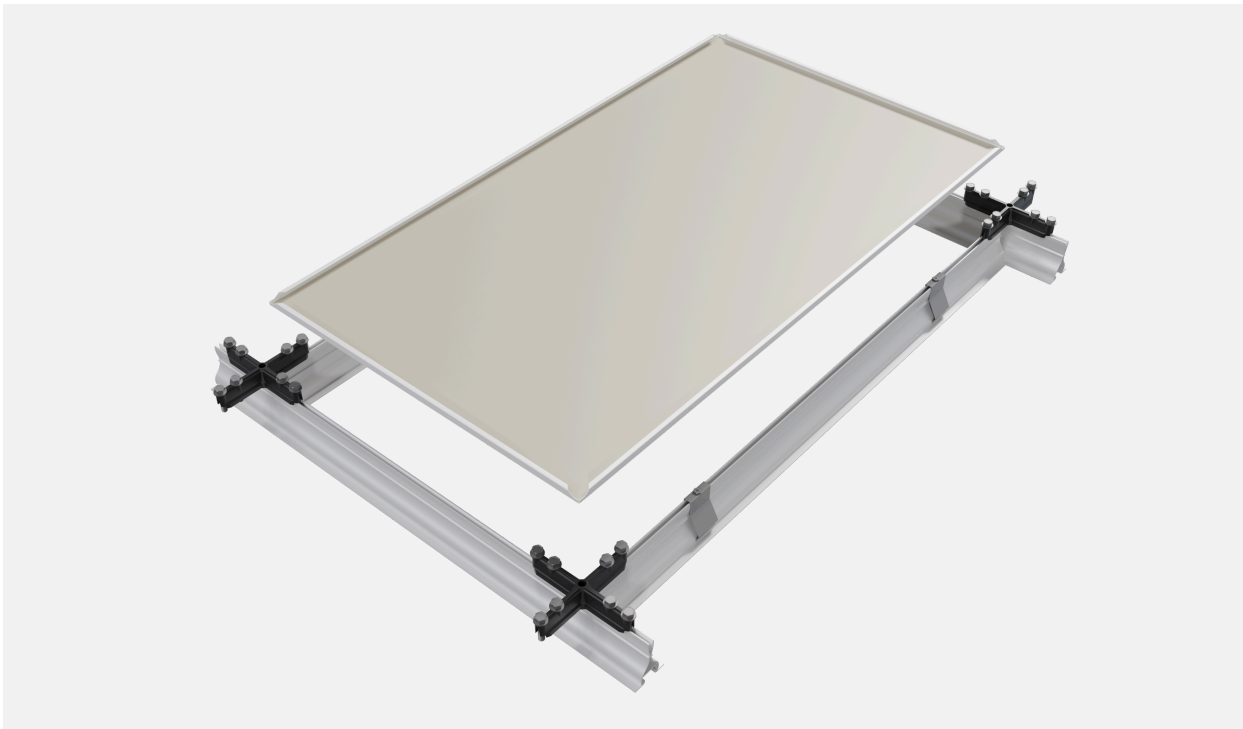
# Tate Forte LEC Metal Ceiling Tile



EN 12114



AS/NZS5637.1



## Main Characteristics

Dimensions - 1153 x 553 x 0.7mm

Weight - 3.71kg

Thickness - 0.7mm

Material - Galvanised pre-painted steel

Front Colour - RAL 9016

Back Finish - Unpainted Treated Steel

Fire classification - AS/NZS5637.1

Security hold down clips optional

Factory applied gasket optional

\*The metal pan ceiling tile is designed exclusively for the Tate Forte LEC structural ceiling systems. Suitable for data centre applications, the metal pan ceiling tile offers a clean finish to the structural ceiling systems. LEC refers to the ceiling grid only, not the tile.

Contact our technical team for support: T: (02) 9612 2300, E: [info@tateapac.com](mailto:info@tateapac.com)

**Tate Asia - Pacific Pty Ltd**  
Level 12, 100 George Street, Parramatta NSW 2150  
[tateglobal.com](http://tateglobal.com)

Please note we reserve the right to change specification or design and supply products which may differ from those described and illustrated without notice and without liability. 09/2025

**Tate.**<sup>®</sup>